

## CDK6(phospho-Tyr13) Antibody

Catalog No: #11542

Package Size: #11542-1 50ul #11542-2 100ul

Orders: [order@signalwayantibody.com](mailto:order@signalwayantibody.com)Support: [tech@signalwayantibody.com](mailto:tech@signalwayantibody.com)

## Description

|                       |   |
|-----------------------|---|
| Product Name          | CDK6(phospho-Tyr13) Antibody  |
| Host Species          | Rabbit  |
| Clonality             | Polyclonal  |
| Purification          | Antibodies were produced by immunizing rabbits with synthetic phosphopeptide and KLH conjugates.<br>Antibodies were purified by affinity-chromatography using epitope-specific phosphopeptide. Non-phospho specific antibodies were removed by chromatography using non-phosphopeptide. |
| Applications          | WB IHC IF   |
| Species Reactivity    | Hu Ms Rt  |
| Specificity           | The antibody detects endogenous level of CDK6 only when phosphorylated at tyrosine 13.  |
| Immunogen Type        | Peptide-KLH   |
| Immunogen Description | Peptide sequence around phosphorylation site of tyrosine 13 (Q-Q-Y(p)-E-C) derived from Human CDK6.   |
| Target Name           | CDK6  |
| Modification          | Phospho   |
| Other Names           | Serine/threonine-protein kinase PLSTIRE   |
| Accession No.         | Swiss-Prot: Q00534NCBI Protein: NP_001138778.1  |
| Uniprot               | Q00534  |
| GeneID                | 1021;   |
| Concentration         | 1.0mg/ml  |
| Formulation           | Supplied at 1.0mg/mL in phosphate buffered saline (without Mg <sup>2+</sup> and Ca <sup>2+</sup> ), pH 7.4, 150mM NaCl, 0.02% sodium azide and 50% glycerol.  |
| Storage               | Store at -20°C for long term preservation (recommended). Store at 4°C for short term use.   |

## Application Details

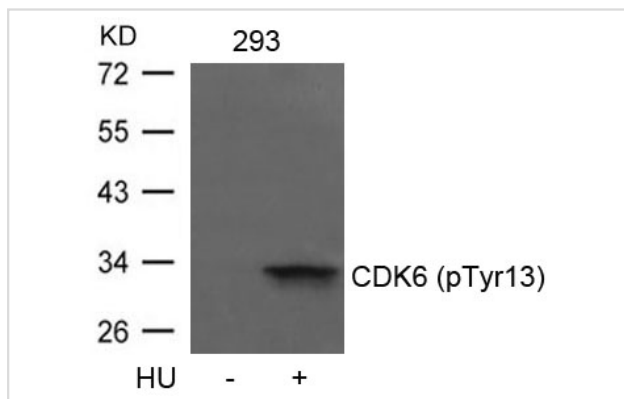
Predicted MW: 36kd

Western blotting: 1:500~1:1000

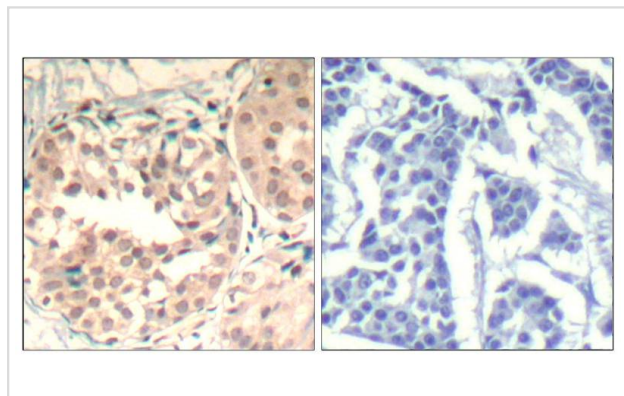
Immunohistochemistry: 1:50~1:100

Immunofluorescence: 1:100~1:200

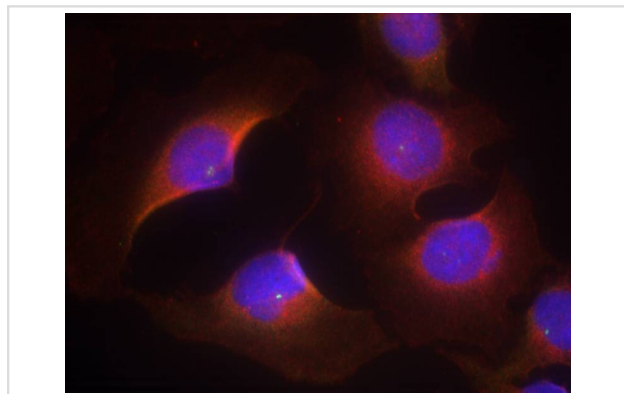
## Images



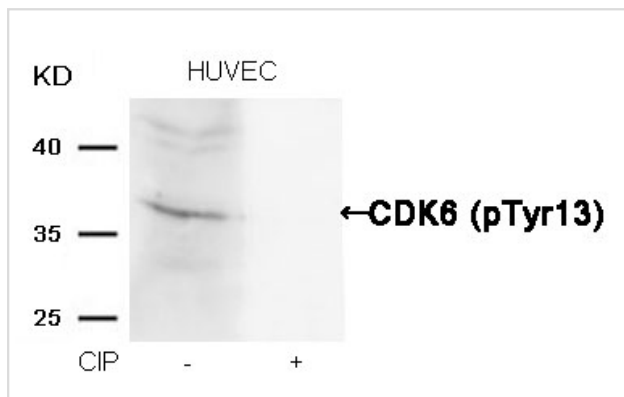
Western blot analysis of extracts from 293 cells untreated or treated with HU using CDK6(phospho-Tyr13) Antibody #11542.



Immunohistochemical analysis of paraffin-embedded human breast carcinoma tissue using CDK6(Phospho-Tyr13) Antibody #11542(left) or the same antibody preincubated with blocking peptide(right).



Immunofluorescence staining of methanol-fixed HeLa cells using CDK6(phospho-Tyr13) Antibody #11542.



Western blot analysis of extracts from HUVEC cells, treated with calf intestinal phosphatase (CIP), using CDK6 (phospho-Tyr13) Antibody #11542.

## Background

Probably involved in the control of the cell cycle. Interacts with D-type G1 cyclins.

Note: This product is for in vitro research use only