

TMEM192 Antibody

Catalog No: #25277

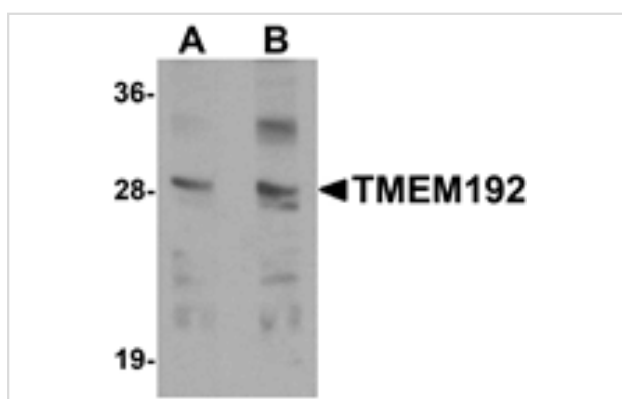
Orders: order@signalwayantibody.com

Support: tech@signalwayantibody.com

Description

Product Name	TMEM192 Antibody
Host Species	Rabbit
Clonality	Polyclonal
Purification	Affinity chromatography purified via peptide column
Applications	ELISA WB
Species Reactivity	Hu Ms Rt
Specificity	At least two isoforms of TMEM192 are known to exist; this antibody will recognize both. TMEM192 antibody is predicted to not cross-react with other TMEM proteins.
Immunogen Type	Peptide
Immunogen Description	Raised against a 17 amino acid peptide near the carboxy terminus of human TMEM192.
Target Name	TMEM192
Other Names	Transmembrane 192
Accession No.	Swiss-Prot:Q8IY95Gene ID:201931
Uniprot	Q8IY95
GeneID	201931;
Concentration	1mg/ml
Formulation	Supplied in PBS containing 0.02% sodium azide.
Storage	Antibody can be stored at 4°C up to one year. Antibodies should not be exposed to prolonged high temperatures.

Images



Western blot analysis of TMEM192 in SK-N-SH cell lysate with TMEM192 antibody at (A) 0.5 and (B) 1 µg/mL.

Background

TMEM192 is a widely expressed, four transmembrane protein that localizes to late endosomal/lysosomal membranes. This localization is mediated by two dileucine motifs present at the amino-terminus of TMEM192. A cysteine residue near the carboxy residue is responsible for disulfide bond formation in TMEM192 homodimers. Little is known about the function of this protein.

Note: This product is for in vitro research use only