

TM4SF1 Antibody

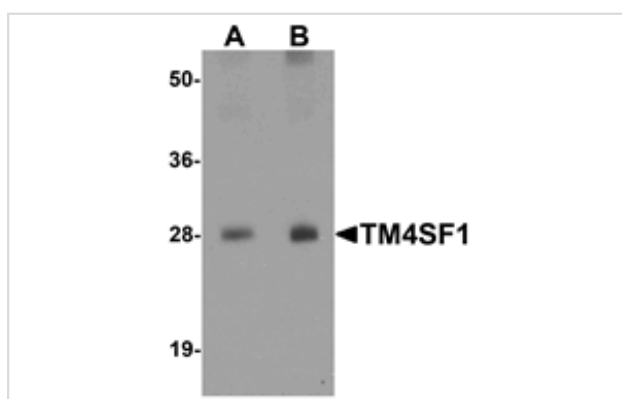
Catalog No: #25278

Orders: order@signalwayantibody.comSupport: tech@signalwayantibody.com

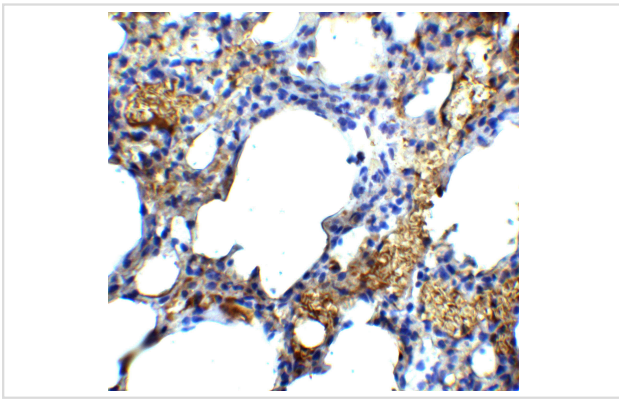
Description

Product Name	TM4SF1 Antibody
Host Species	Rabbit
Clonality	Polyclonal
Purification	Affinity chromatography purified via peptide column
Applications	ELISA WB
Species Reactivity	Hu Ms Rt
Specificity	At least three isoforms of TM4SF1 are known to exist; this antibody will recognize only the two largest isoforms. TM4SF1 antibody is predicted to not cross-react with other tetraspanin proteins.
Immunogen Type	Peptide
Immunogen Description	Raised against an 18 amino acid peptide near the amino terminus of human TM4SF1.
Target Name	TM4SF1
Other Names	Transmembrane 4 L6 family member 1, L6, H-L6, M3S1, TAAL6
Accession No.	Swiss-Prot:P30408Gene ID:4071
Uniprot	P30408
GeneID	4071;
Concentration	1mg/ml
Formulation	Supplied in PBS containing 0.02% sodium azide.
Storage	Can be stored at -20°C, stable for one year. As with all antibodies care should be taken to avoid repeated freeze thaw cycles. Antibodies should not be exposed to prolonged high temperatures.

Images



Western blot analysis of TM4SF1 in human lung tissue lysate with TM4SF1 antibody at (A) 0.5 and (B) 1 ug/mL.



Immunohistochemistry of TM4SF1 in mouse lung tissue with TM4SF1 antibody at 5 µg/mL.

Background

TM4SF1 is a member of the transmembrane 4 superfamily, also known as the tetraspanin family. Most of these members are cell-surface proteins that are characterized by the presence of four hydrophobic domains and mediate signal transduction events that play a role in the regulation of cell development, activation, growth and motility. TM4SF1 is a cell surface antigen and is highly expressed in the vascular endothelium of several human cancers. Knockdown experiments of TM4SF1 prevented filopodia formation, inhibited cell mobility, blocked cytokinesis, and inhibited maturation of VEGF-A-induced angiogenesis, suggesting that TM4SF1 may be an attractive target for anti-angiogenesis therapy.

Note: This product is for in vitro research use only