

ROCK1 Antibody

Catalog No: #25299

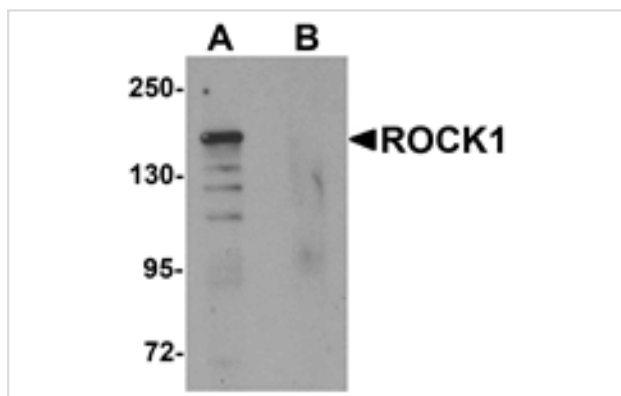
Orders: order@signalwayantibody.com

Support: tech@signalwayantibody.com

Description

Product Name	ROCK1 Antibody
Host Species	Rabbit
Clonality	Polyclonal
Purification	Affinity chromatography purified via peptide column
Applications	ELISA WB
Species Reactivity	Hu Ms Rt
Specificity	ROCK1 antibody is predicted to not cross-react with other ROCK protein family members.
Immunogen Type	Peptide
Immunogen Description	Raised against a 15 amino acid peptide near the amino terminus of human ROCK1.
Target Name	ROCK1
Other Names	Rho-associated coiled-coil containing protein kinase 1, p160ROCK
Accession No.	Swiss-Prot:Q13464Gene ID:6093
Uniprot	Q13464
GeneID	6093;
Concentration	1mg/ml
Formulation	Supplied in PBS containing 0.02% sodium azide.
Storage	Can be stored at -20°C, stable for one year. As with all antibodies care should be taken to avoid repeated freeze thaw cycles. Antibodies should not be exposed to prolonged high temperatures.

Images



Western blot analysis of ROCK1 in 293 cell lysate with ROCK1 antibody at 1 ug/mL in (A) the absence and (B) the presence of blocking peptide.

Background

ROCK1 is a member of the AGC serine/threonine protein kinase family that regulates the assembly of the actin cytoskeleton. ROCK1 contains a protein kinase domain, a coiled-coil region and a zinc finger region and appears to be present as a dimer. ROCK1, like its isozyme ROCK2, is a downstream target of the small G-protein Rho and plays a role in smooth muscle contraction, malignant cell transformation, tumor invasion and metastasis, and mediates the cellular morphological changes during apoptosis.

Note: This product is for in vitro research use only