

ROCK2 Antibody

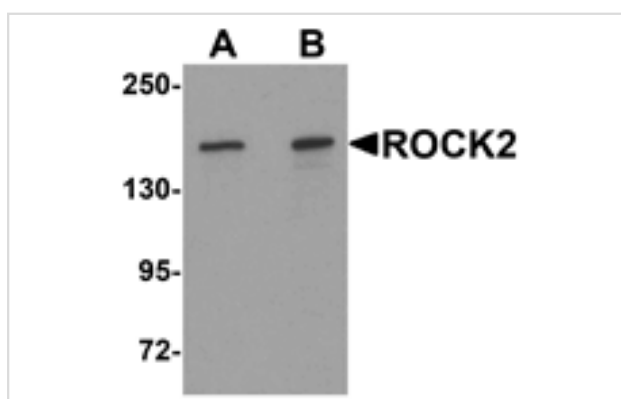
Catalog No: #25300

Orders: order@signalwayantibody.comSupport: tech@signalwayantibody.com

Description

Product Name	ROCK2 Antibody
Host Species	Rabbit
Clonality	Polyclonal
Purification	Affinity chromatography purified via peptide column
Applications	ELISA WB
Species Reactivity	Hu Ms Rt
Specificity	Three isoforms of ROCK2 are known to exist; this antibody recognizes all three isoforms. ROCK2 antibody is predicted to not cross-react with other ROCK protein family members.
Immunogen Type	Peptide
Immunogen Description	Raised against a 15 amino acid peptide near the center of human ROCK2.
Target Name	ROCK2
Other Names	Rho-associated coiled-coil containing protein kinase 2, Rho kinase 2, p164 ROCK-2
Accession No.	Swiss-Prot:O75116Gene ID:9475
Uniprot	O75116
GeneID	9475;
Concentration	1mg/ml
Formulation	Supplied in PBS containing 0.02% sodium azide.
Storage	Can be stored at -20°C, stable for one year. As with all antibodies care should be taken to avoid repeated freeze thaw cycles. Antibodies should not be exposed to prolonged high temperatures.

Images



Western blot analysis of ROCK2 in mouse brain tissue lysate with ROCK2 antibody at (A) 1 and (B) 2 ug/mL

Background

ROCK2 is a member of the AGC serine/threonine protein kinase family that regulates the assembly of the actin cytoskeleton. ROCK2 contains a protein kinase domain, a coiled-coil region and a zinc finger region and appears to be present as a dimer. ROCK2, like its isozyme ROCK1, is a downstream target of the small G-protein Rho and plays a role in smooth muscle contraction, malignant cell transformation, tumor invasion and metastasis, and mediates the cellular morphological changes during apoptosis.

Note: This product is for in vitro research use only