

c-Jun(Ab-63) Antibody

Catalog No: #21001

Package Size: #21001-1 50ul #21001-2 100ul

Orders: order@signalwayantibody.com

Support: tech@signalwayantibody.com

Description

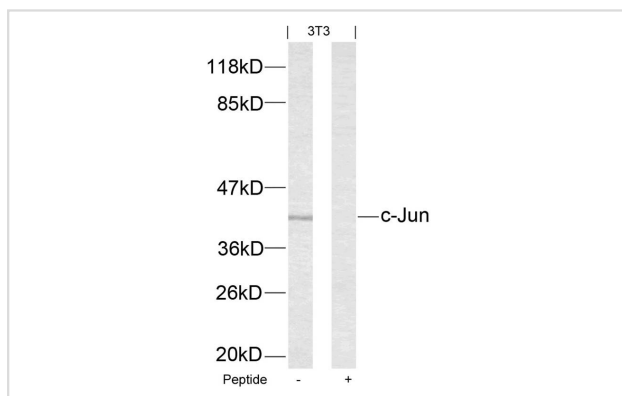
Product Name	c-Jun(Ab-63) Antibody
Host Species	Rabbit
Clonality	Polyclonal
Purification	Antibodies were produced by immunizing rabbits with synthetic peptide and KLH conjugates. Antibodies were purified by affinity-chromatography using epitope-specific peptide.
Applications	WB
Species Reactivity	Hu Ms Rt
Specificity	The antibody detects endogenous level of total c-Jun protein.
Immunogen Type	Peptide-KLH
Immunogen Description	Peptide sequence around aa. 61~65 (L-T-S-P-D) derived from Human c-Jun.
Target Name	c-Jun
Other Names	AH119; AP1; Jun A; c-Jun; p39
Accession No.	Swiss-Prot: P05412NCBI Protein: NP_002219.1
Uniprot	P05412
GeneID	3725;
Concentration	1.0mg/ml
Formulation	Supplied at 1.0mg/mL in phosphate buffered saline (without Mg ²⁺ and Ca ²⁺), pH 7.4, 150mM NaCl, 0.02% sodium azide and 50% glycerol.
Storage	Store at -20°C for long term preservation (recommended). Store at 4°C for short term use.

Application Details

Predicted MW: 43kd

Western blotting: 1:500~1:1000

Images



Western blot analysis of extracts from 3T3 cells using c-Jun(Ab)

Background

Transcription factor that recognizes and binds to the enhancer heptamer motif 5'-TGA[CG]TCA-3'.

Wei W, et al. (2005). *Cancer Cell*. 8(1): 25-33.

Sevilla A, et al. (2004). *Oncogene*.23 (55): 8950-8958.

Li L, et al. (2004). *J Biol Chem*.279 (6): 4058-4065.

Hurd C, et al. (2002). *Oncogene*.21 (14): 2154-2160.

Note: This product is for in vitro research use only