

## RASSF6 Antibody

Catalog No: #25373

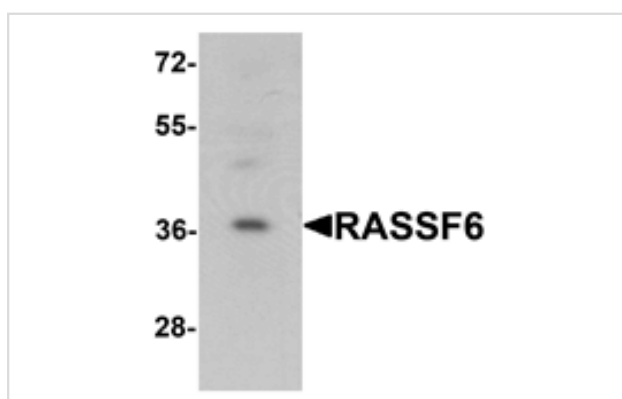
Orders: order@signalwayantibody.com

Support: tech@signalwayantibody.com

## Description

Product Name	RASSF6 Antibody
Host Species	Rabbit
Clonality	Polyclonal
Purification	Affinity chromatography purified via peptide column
Applications	ELISA WB
Species Reactivity	Hu
Specificity	At least four isoforms of RASSF6 are known to exist. RASSF6 antibody is predicted to not cross-react with other RASSF family members.
Immunogen Type	Peptide
Immunogen Description	Raised against a 14 amino acid peptide near the center of human RASSF6.
Target Name	RASSF6
Other Names	Ras association, RaIGDS, AF-6, domain family 6
Accession No.	Swiss-Prot:Q6ZTQ3Gene ID:166824
Uniprot	Q6ZTQ3
GeneID	166824;
Concentration	1mg/ml
Formulation	Supplied in PBS containing 0.02% sodium azide.
Storage	Can be stored at -20°C, stable for one year. As with all antibodies care should be taken to avoid repeated freeze thaw cycles. Antibodies should not be exposed to prolonged high temperatures.

## Images



Western blot analysis of RASSF6 in 293 cell lysate with RASSF6 antibody at 1 ug/mL.

## Background

RASSF family proteins are tumor suppressors that are frequently downregulated during the development of human cancer. RASSF6 (Ras association (RaIGDS/AF-6) domain family member 6), a member of RASSF family, acts as a Ras effector protein / tumor suppressor. RASSF6 contains one Ras-associating domain and one SARAH domain. It is involved in the induction of apoptosis, through both caspase-dependent and caspase-independent pathways. Defects in RASSF6 may facilitate viral NFκ-B pathway and may play a vital role in infection.

---

Note: This product is for in vitro research use only