

c-Jun(Ab-73) Antibody

Catalog No: #21003

Package Size: #21003-1 50ul #21003-2 100ul

Orders: order@signalwayantibody.com

Support: tech@signalwayantibody.com

Description

| | |
|-----------------------|---|
| Product Name | c-Jun(Ab-73) Antibody |
| Host Species | Rabbit |
| Clonality | Polyclonal |
| Purification | Antibodies were produced by immunizing rabbits with synthetic peptide and KLH conjugates. Antibodies were purified by affinity-chromatography using epitope-specific peptide. |
| Applications | WB IHC |
| Species Reactivity | Hu Ms Rt |
| Specificity | The antibody detects endogenous level of total c-Jun protein. |
| Immunogen Type | Peptide-KLH |
| Immunogen Description | Peptide sequence around aa.71~75 (L-A-S-P-E) derived from Human c-Jun. |
| Target Name | c-Jun |
| Other Names | AH119; AP1; Jun A; c-Jun; p39 |
| Accession No. | Swiss-Prot: P05412NCBI Protein: NP_002219.1 |
| Uniprot | P05412 |
| GeneID | 3725; |
| Concentration | 1.0mg/ml |
| Formulation | Supplied at 1.0mg/mL in phosphate buffered saline (without Mg ²⁺ and Ca ²⁺), pH 7.4, 150mM NaCl, 0.02% sodium azide and 50% glycerol. |
| Storage | Store at -20°C for long term preservation (recommended). Store at 4°C for short term use. |

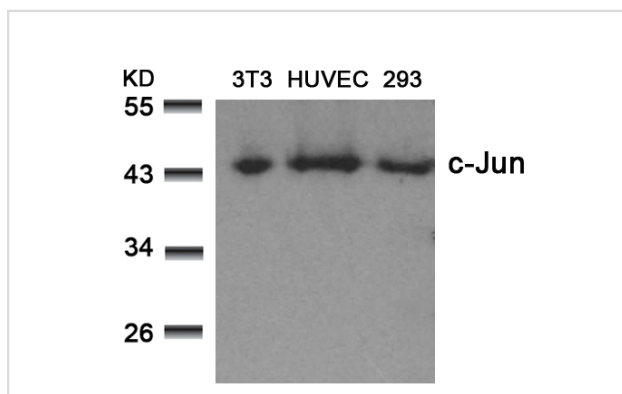
Application Details

Predicted MW: 43kd

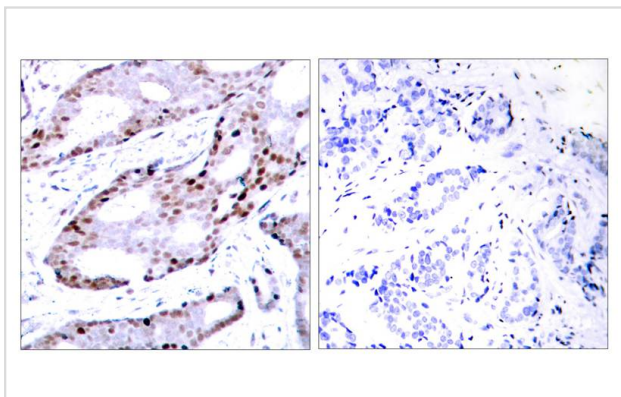
Western blotting: 1:500~1:1000

Immunohistochemistry: 1:50~1:100

Images



Western blot analysis of extracts from 3T3, HUVEC and 293 cells using c-Jun(Ab-73) Antibody #21003.



Immunohistochemical analysis of paraffin-embedded human breast carcinoma tissue using c-Jun(Ab-73) Antibody #21003(left) or the same antibody preincubated with blocking peptide(right).

Background

Transcription factor that recognizes and binds to the enhancer heptamer motif 5'-TGA[CG]TCA-3'.

Sevilla A, et al. (2004) *Oncogene*.23 (55): 8950-8958.

Beausoleil S A, et al. (2004) *Proc Natl Acad Sci U S A*. 101(33): 12130-12135.

Binetruy B, et al. (1991) *Nature*. 351:122-127.

Smeal T, et al. (1991) *Nature*. 354: 494-496.

Derijard B, et al. (1994) *Cell*. 76:1025-1037.

Note: This product is for in vitro research use only