

PIWI-L2 Antibody

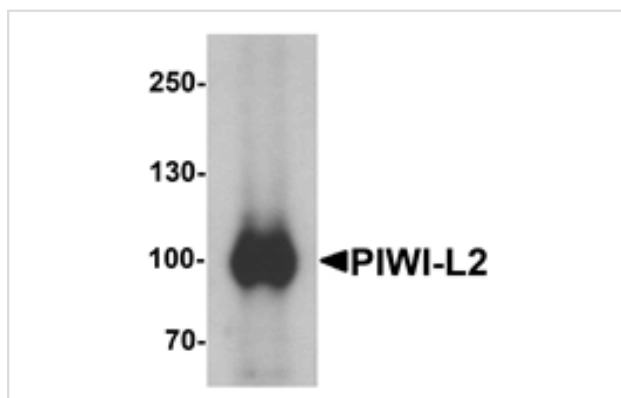
Catalog No: #25385

Orders: order@signalwayantibody.comSupport: tech@signalwayantibody.com

Description

| | |
|-----------------------|--|
| Product Name | PIWI-L2 Antibody |
| Host Species | Rabbit |
| Clonality | Polyclonal |
| Purification | Affinity chromatography purified via peptide column |
| Applications | ELISA WB |
| Species Reactivity | Hu Ms |
| Specificity | At least three isoforms of PIWI-L2 are known to exist; this antibody will only detect the two longest isoforms. PIWI-L2 antibody is predicted to not cross-react with other PIWI protein family members. |
| Immunogen Type | Peptide |
| Immunogen Description | Raised against a 17 amino acid peptide near the center of human PIWI-L2. |
| Target Name | PIWI-L2 |
| Other Names | PIWI-like 2, PIWIL2, PIWIL1L, HILI, MILI |
| Accession No. | Swiss-Prot:Q8TC59 Gene ID:55124 |
| Uniprot | Q8TC59 |
| GeneID | 55124; |
| Concentration | 1mg/ml |
| Formulation | Supplied in PBS containing 0.02% sodium azide. |
| Storage | Can be stored at -20°C, stable for one year. As with all antibodies care should be taken to avoid repeated freeze thaw cycles. Antibodies should not be exposed to prolonged high temperatures. |

Images



Western blot analysis of PIWI-L2 in HepG2 cell lysate with PIWI-L1 antibody at 1 ug/mL.

Background

PIWI-L2 is a member of the PIWI subfamily of Argonaute proteins, evolutionarily conserved proteins containing both PAZ and Piwi motifs that are crucial for the biogenesis and function of small non-coding RNAs and play important roles in stem cell self-renewal, RNA silencing, and translational regulation in diverse organisms. PIWI-L2 has been implicated in multiple roles including stem cell self-renewal and is highly expressed in many breast cancers. In these tumors, PIWI-L2 silences the expression of STAT3, a regulator of Bcl-XL and cyclin D1, allowing the proliferation and survival of breast cancer stem cells. Recent studies have shown that overexpression of PIWI-like proteins are potential biomarkers for colon and other cancers.

Note: This product is for in vitro research use only