

CD33 Antibody

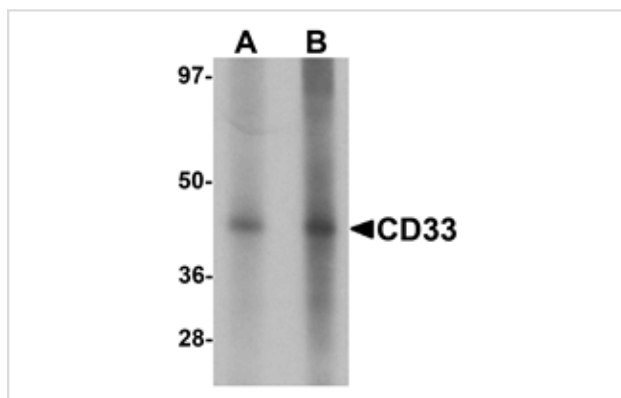
Catalog No: #25387

Orders: order@signalwayantibody.comSupport: tech@signalwayantibody.com

Description

Product Name	CD33 Antibody
Host Species	Rabbit
Clonality	Polyclonal
Purification	Affinity chromatography purified via peptide column
Applications	ELISA WB
Species Reactivity	Hu Ms Rt
Specificity	At least three isoforms of CD33 are known to exist; this antibody will detect all three isoforms.
Immunogen Type	Peptide
Immunogen Description	Raised against a 14 amino acid peptide near the center of human CD33.
Target Name	CD33
Other Names	Myeloid surface antigen CD33, p67, SIGLEC3
Accession No.	Swiss-Prot:P20138Gene ID:945
Uniprot	P20138
GeneID	945;
Concentration	1mg/ml
Formulation	Supplied in PBS containing 0.02% sodium azide.
Storage	Can be stored at -20°C, stable for one year. As with all antibodies care should be taken to avoid repeated freeze thaw cycles. Antibodies should not be exposed to prolonged high temperatures.

Images



Western blot analysis of CD33 in 3T3 cell lysate with CD33 antibody at (A) 1 and (B) 2 ug/mL.

Background

CD33 is a member of the sialic acid-binding immunoglobulin-like lectin (Siglec) family that is highly expressed on myeloid progenitor cells. Assessment of CD33 expression is of great importance in the immunodiagnosis of acute leukemia, allowing distinction between myeloid and lymphoid origin, as CD33 is generally restricted to the myelomonocytic lineage. CD33 can associate with the protein-tyrosine phosphatases SHP-1 and SHP-2 and thus could modulate downstream signaling events associated with cell activation. Common variants of CD33 have been found to be associated with late-onset Alzheimer's disease.

Note: This product is for in vitro research use only