

Elk-1(Ab-383) Antibody

Catalog No: #21004

Package Size: #21004-1 50ul #21004-2 100ul

Orders: order@signalwayantibody.com

Support: tech@signalwayantibody.com

Description

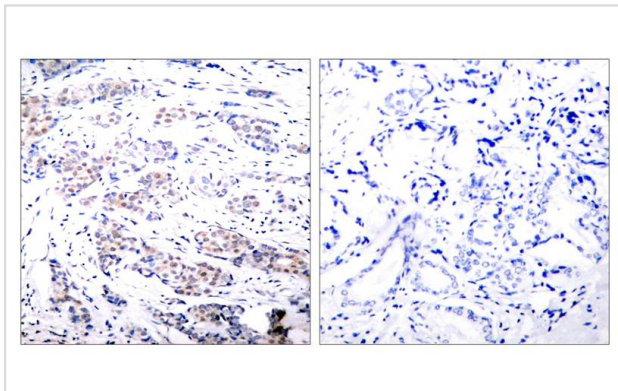
Product Name	Elk-1(Ab-383) Antibody
Host Species	Rabbit
Clonality	Polyclonal
Purification	Antibodies were produced by immunizing rabbits with synthetic peptide and KLH conjugates. Antibodies were purified by affinity-chromatography using epitope-specific peptide.
Applications	IHC
Species Reactivity	Hu Ms Rt
Specificity	The antibody detects endogenous level of total Elk-1 protein.
Immunogen Type	Peptide-KLH
Immunogen Description	Peptide sequence around aa.381~385 (T-L-S-P-I) derived from Human Elk1.
Target Name	Elk-1
Other Names	ELK1; ETS-domain protein Elk-1;
Accession No.	Swiss-Prot: P19419NCBI Protein: NP_001107595.1
Uniprot	P19419
GeneID	2002;
Concentration	1.0mg/ml
Formulation	Supplied at 1.0mg/mL in phosphate buffered saline (without Mg ²⁺ and Ca ²⁺), pH 7.4, 150mM NaCl, 0.02% sodium azide and 50% glycerol.
Storage	Store at -20°C for long term preservation (recommended). Store at 4°C for short term use.

Application Details

Predicted MW: 47kd

Immunohistochemistry: 1:50~1:100

Images



Immunohistochemical analysis of paraffin-embedded human breast carcinoma tissue using Elk-1(Ab-383) Antibody #21004(left) or the same antibody preincubated with blocking peptide(right).

Background

Elk-1 is a member of the Ets family of transcription factors and of the ternary complex factor (TCF) subfamily. Proteins of the TCF subfamily form a ternary complex by binding to the the serum response factor and the serum reponse element in the promoter of the c-fos proto-oncogene. The protein encoded by this gene is a nuclear target for the ras-raf-MAPK signaling cascade. Alternatively spliced transcript variants encoding the same protein have been found for this gene

Xing J, et al. (1996) *Science*. 273(5277): 959-963.

Janknecht R, et al. (1993) *EMBO J*. 12(13): 5097-5104.

Marais R, et al. (1993) *Cell* 73: 381-393.

Kortenjann M, et al. (1994) *Mol Cell Biol*. 14: 4815-4824.

Cavigelli M, et al. (1995) *EMBO J*. 14: 5957-5964.

Whitmarsh A J, et al. (1995) *Science*. 269:403-407.

Note: This product is for in vitro research use only