

JMJD3 Antibody

Catalog No: #25412

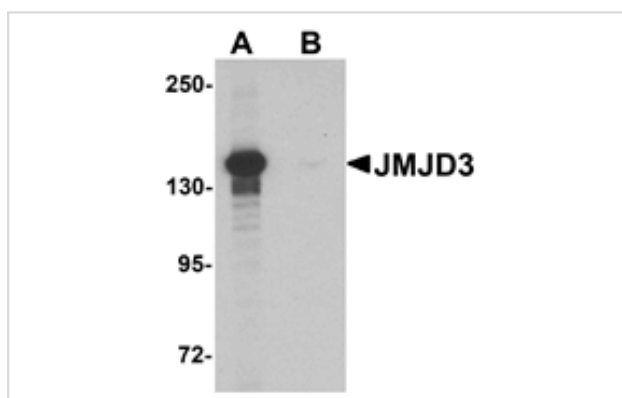
Orders: order@signalwayantibody.com

Support: tech@signalwayantibody.com

Description

Product Name	JMJD3 Antibody
Host Species	Rabbit
Clonality	Polyclonal
Purification	Affinity chromatography purified via peptide column
Applications	ELISA WB
Species Reactivity	Hu Ms Rt
Specificity	This antibody is specific for JMJD3 and will not recognize other JMJD proteins.
Immunogen Type	Peptide
Immunogen Description	Raised against a 16 amino acid peptide from near the amino terminus of human JMJD3.
Target Name	JMJD3
Other Names	Jumonji domain-containing protein 3, Lysine-specific demethylase 6B, KDM6B
Accession No.	Swiss-Prot:O15054Gene ID:23135
Uniprot	O15054
GeneID	23135;
Concentration	1mg/ml
Formulation	Supplied in PBS containing 0.02% sodium azide.
Storage	Can be stored at -20°C, stable for one year. As with all antibodies care should be taken to avoid repeated freeze thaw cycles. Antibodies should not be exposed to prolonged high temperatures.

Images



Western blot analysis of JMJD3 in K562 cell lysate with JMJD3 antibody at 0.5 ug/mL in (A) the absence and (B) the presence of blocking peptide.

Background

The Jumonji domain-containing protein 3 (JMJD3) functions as a trimethylation-specific demethylase, converting the trimethylated histone H3 Lys27 residue to the dimethylated form, and is thought to also function as a transcriptional repressor. JMJD3 plays a central role in regulation of posterior development, by regulating HOX gene expression. It is involved in inflammatory response by participating in macrophage differentiation in case of inflammation by regulating gene expression and macrophage differentiation. JMJD3 can also interact with and demethylate p53, resulting in its stabilization and localization to the nucleus in mouse embryo fibroblasts during neural stem cell differentiation.

Note: This product is for in vitro research use only