

RAB21 Antibody

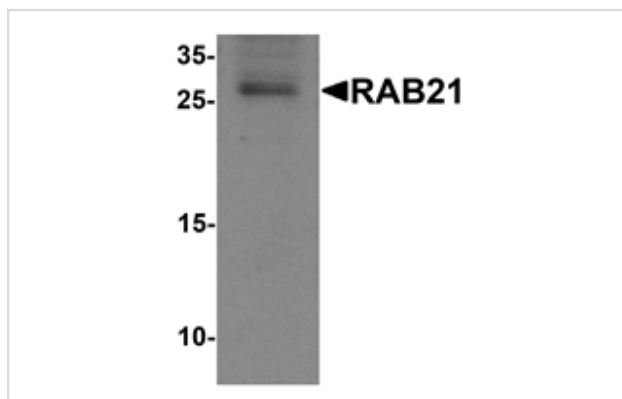
Catalog No: #25510

Orders: order@signalwayantibody.comSupport: tech@signalwayantibody.com

Description

Product Name	RAB21 Antibody
Host Species	Rabbit
Clonality	Polyclonal
Purification	Affinity chromatography purified via peptide column
Applications	ELISA WB
Species Reactivity	Hu Ms Rt
Specificity	This antibody is predicted to not cross-react with other Ras-related proteins
Immunogen Type	Peptide
Immunogen Description	19 amino acid peptide near the carboxy terminus of human RAB21.
Target Name	RAB21
Other Names	Ras-related protein Rab-21
Accession No.	Swiss-Prot:Q9UL25Gene ID:23011
Uniprot	Q9UL25
GeneID	23011;
Concentration	1mg/ml
Formulation	PBS containing 0.02% sodium azide.
Storage	Store at 4°C for three months and -20°C, stable for up to one year.

Images



Western blot analysis of RAB21 in mouse kidney tissue lysate with RAB21 antibody at 1 ug/ml.

Note: This product is for in vitro research use only