

## CLAUDIN4 Antibody

Catalog No: #25538

Orders: [order@signalwayantibody.com](mailto:order@signalwayantibody.com)Support: [tech@signalwayantibody.com](mailto:tech@signalwayantibody.com)

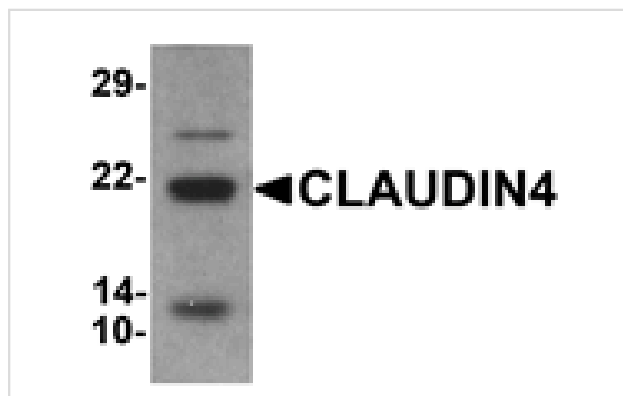
## Description

Product Name	CLAUDIN4 Antibody
Host Species	Rabbit
Clonality	Polyclonal
Purification	Affinity chromatography purified via peptide column
Applications	ELISA WB
Species Reactivity	Hu Ms Rt
Specificity	At least four isoforms of CLAUDIN4 are known to exist; CLAUDIN4 antibody will detect all four isoforms
Immunogen Type	Peptide
Immunogen Description	17 amino acid peptide near the carboxy terminus of human CLAUDIN4.
Target Name	CLAUDIN4
Other Names	Claudin-4, CLDN4, CPER, CPE-R, CPETR, CPETR1, WBSCR8
Accession No.	Swiss-Prot:O14493Gene ID:1364
Uniprot	O14493
GeneID	1364;
Concentration	1mg/ml
Formulation	PBS containing 0.02% sodium azide.
Storage	Store at 4°C for three months and -20°C, stable for up to one year.

## Application Details

Predicted MW: 23kd

## Images



Western blot analysis of CLAUDIN4 in human colon tissue lysate with CLAUDIN4 antibody at 1 ug/ml

Note: This product is for in vitro research use only