

## Bim Monoclonal Antibody

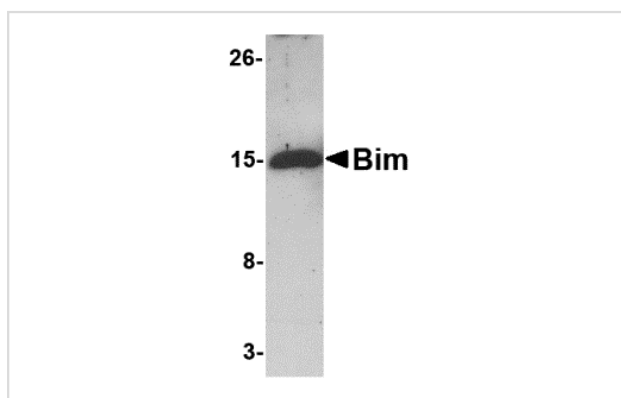
Catalog No: #26025

Orders: [order@signalwayantibody.com](mailto:order@signalwayantibody.com)Support: [tech@signalwayantibody.com](mailto:tech@signalwayantibody.com)

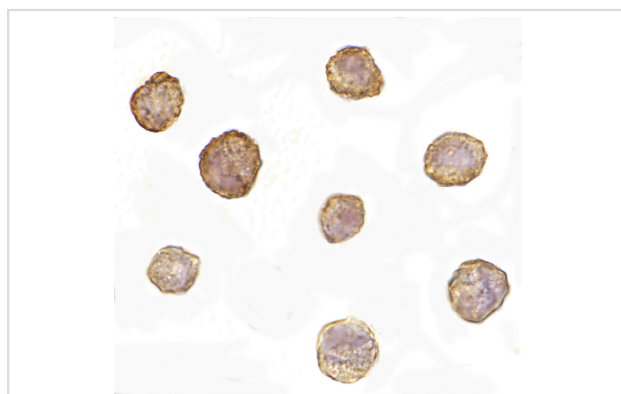
## Description

Product Name	Bim Monoclonal Antibody
Host Species	Mouse
Clonality	Monoclonal
Clone No.	mAb (Clone 1C2H4)
Purification	Immunoaffinity chromatography purified IgG
Applications	ELISA WB ICC
Species Reactivity	Hu Ms Rt
Immunogen Type	Recombinant protein
Immunogen Description	Raised against a recombinant protein corresponding to amino acids 2 to 198 of human Bim.
Target Name	Bim
Other Names	Bim (1C2H4): Bcl-2 interacting protein, Bcl-2-related ovarian death gene, BOD, Bcl-2-like 11
Accession No.	Swiss-Prot:O43521 Gene ID:10018
Uniprot	O43521
GeneID	10018;
Concentration	1mg/ml
Formulation	Supplied in PBS containing 0.02% sodium azide.
Storage	Can be stored at -20°C, stable for one year.

## Images



Western blot analysis of 5 ng of Bim recombinant protein with Bim antibody at 1 ug/mL.



Immunocytochemistry of Bim in K562 cells with Bim antibody at 10 ug/mL.

## Background

---

Members in the Bcl-2 family are critical regulators of apoptosis by either inhibiting or promoting cell death. Bcl-2 homology 3 (BH3) domain is a potent death domain. BH3 domain containing pro-apoptotic proteins, including Bad, Bax, Bid, Bik, and Hrk, form a growing subclass of the Bcl-2 family. Bim is another BH3 domain containing protein which can induce apoptosis. Bim interacts with diverse members in the pro-survival Bcl-2 sub-family including Bcl-2, Bcl-xL and Bcl-w. The messenger RNA of Bim is ubiquitously expressed in multiple tissues and cell lines.

---

Note: This product is for in vitro research use only