

## c-Jun(Ab-170) Antibody

Catalog No: #21023

Package Size: #21023-1 50ul #21023-2 100ul

Orders: order@signalwayantibody.com

Support: tech@signalwayantibody.com

## Description

Product Name	c-Jun(Ab-170) Antibody
Host Species	Rabbit
Clonality	Polyclonal
Purification	Antibodies were produced by immunizing rabbits with synthetic peptide and KLH conjugates. Antibodies were purified by affinity-chromatography using epitope-specific peptide.
Applications	WB IHC
Species Reactivity	Hu Ms Rt
Specificity	The antibody detects endogenous level of total c-Jun protein.
Immunogen Type	Peptide-KLH
Immunogen Description	Peptide sequence around aa. 168~172 (P-V-Y-A-N) derived from Human c-Jun.
Target Name	c-Jun
Other Names	AH119; AP1; Jun A; c-Jun; p39
Accession No.	Swiss-Prot: P05412NCBI Protein: NP_002219.1
Uniprot	P05412
GeneID	3725;
Concentration	1.0mg/ml
Formulation	Supplied at 1.0mg/mL in phosphate buffered saline (without Mg <sup>2+</sup> and Ca <sup>2+</sup> ), pH 7.4, 150mM NaCl, 0.02% sodium azide and 50% glycerol.
Storage	Store at -20°C for long term preservation (recommended). Store at 4°C for short term use.

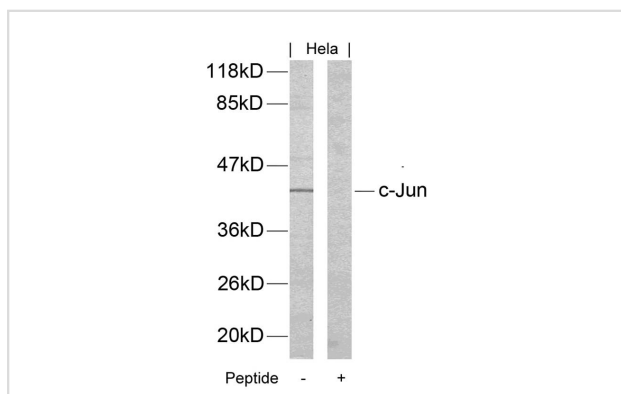
## Application Details

Predicted MW: 43kd

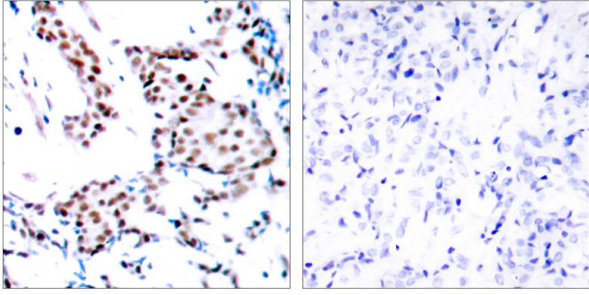
Western blotting: 1:500~1:1000

Immunohistochemistry: 1:50~1:100

## Images



Western blot analysis of extracts from HeLa cells using c-Jun(Ab-170) Antibody #21023 and the same antibody preincubated with blocking peptide.



Immunohistochemical analysis of paraffin-embedded human breast carcinoma tissue using c-Jun(Ab-170) Antibody #21023(left) or the same antibody preincubated with blocking peptide(right).

## Background

Transcription factor that recognizes and binds to the enhancer heptamer motif 5'-TGA[CG]TCA-3'.

Note: This product is for in vitro research use only