

## PD-1 Monoclonal Antibody

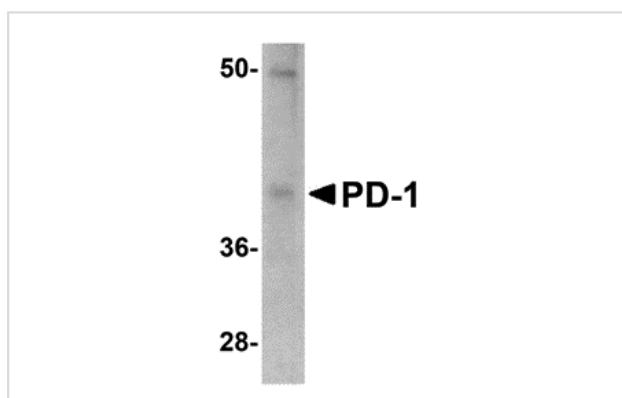
Catalog No: #26035

Orders: [order@signalwayantibody.com](mailto:order@signalwayantibody.com)Support: [tech@signalwayantibody.com](mailto:tech@signalwayantibody.com)

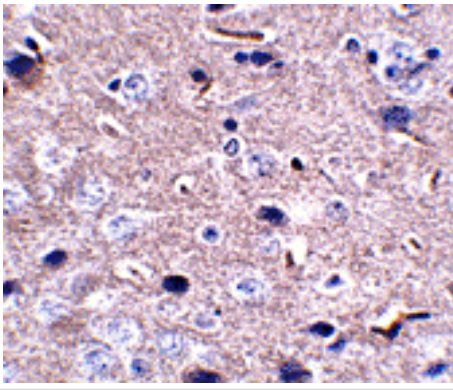
## Description

Product Name	PD-1 Monoclonal Antibody
Host Species	Mouse
Clonality	Monoclonal
Clone No.	mAb (Clone 12A7D7)
Purification	Immunoaffinity chromatography purified IgG
Applications	ELISA WB IHC
Species Reactivity	Hu Ms Rt
Immunogen Type	Recombinant Protein
Immunogen Description	A ~150 amino acid recombinant protein from near the terminus terminus of mouse PD-1.
Target Name	PD-1
Other Names	PD-1 (12A7D7), Programmed cell death 1, PDCD-1, CD279
Accession No.	Swiss-Prot:Q15116Gene ID:5133
Uniprot	Q15116
GeneID	5133;
Concentration	1mg/ml
Formulation	Supplied in PBS containing 0.02% sodium azide.
Storage	Antibody can be stored at 4°C up to one year. Antibodies should not be exposed to prolonged high temperatures.

## Images



Western blot analysis of PD-1 in A-20 cell lysate with PD-1 antibody at 1 ug/mL.



Immunohistochemistry of PD-1 in mouse brain tissue with PD-1 antibody at 2.5 ug/mL.

## Background

Cell-mediated immune responses are initiated by T lymphocytes that are themselves stimulated by cognate peptides bound to MHC molecules on antigen-presenting cells (APC). T-cell activation is generally self-limited as activated T cells express receptors such as PD-1 (also known as PDCD-1) that mediate inhibitory signals from the APC. PD-1 can bind two different but related ligands, PDL-1 and PDL-2. Upon binding to either of these ligands, signals generated by PD-1 inhibit the activation of the immune response in the absence of "danger signals" such as LPS or other molecules associated with bacteria or other pathogens. Evidence for this is seen in PD1-null mice who exhibit hyperactivated immune systems and autoimmune diseases. Despite its predicted molecular weight, PD-1 often migrates at higher molecular weight in SDS-PAGE.

Note: This product is for in vitro research use only