

SMC1A(N-term) Monoclonal Antibody

Catalog No: #27022

Package Size: #27022-1 50ul #27022-2 100ul

Orders: order@signalwayantibody.com

Support: tech@signalwayantibody.com

Description

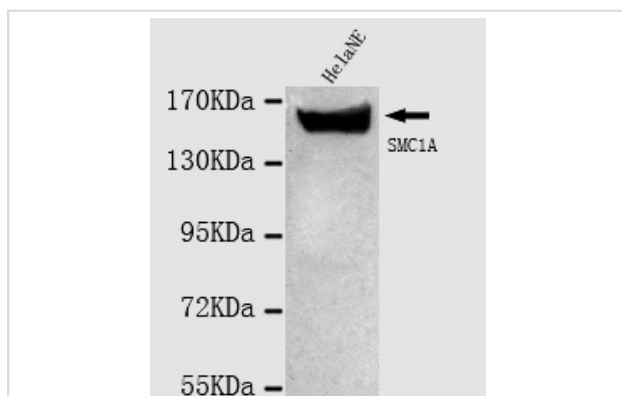
Product Name	SMC1A(N-term) Monoclonal Antibody
Host Species	Mouse
Clonality	Monoclonal
Isotype	IgG1
Purification	Purified by antigen-affinity chromatography.
Applications	WB IHC FC
Species Reactivity	Hu P Ms Rt
Immunogen Type	Recombinant protein
Immunogen Description	Recombinant fragment, corresponding to amino acids 2aa-351aa of human SMC1A(N-terminus).
Target Name	SMC1A
Other Names	structural maintenance of chromosomes protein 1A □SMC-1A □SMC-1-alpha □SMC protein 1A □segregation of mitotic chromosomes 1 □SMC1 structural maintenance of chromosomes 1-like 1 □SMC1 (structural maintenance of chromosomes 1, yeast)-lik
Accession No.	UniProt:Q14683 NCBI Gene ID:8243
Uniprot	Q14683
GeneID	8243;
Formulation	Purified mouse monoclonal in buffer containing 0.1M Tris-Glycine (pH 7.4, 150 mM NaCl) with 0.2% sodium azide, 50%,glycerol
Storage	store at -20°C

Application Details

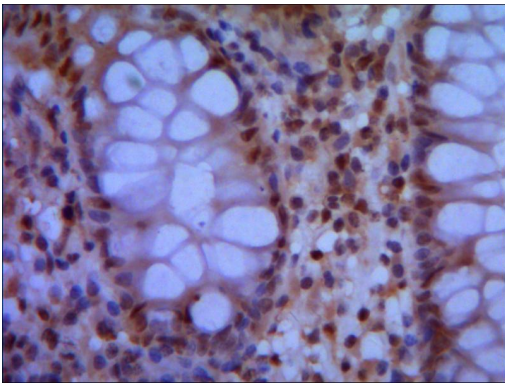
Predicted MW: 150kd

Western blotting: 1:1000

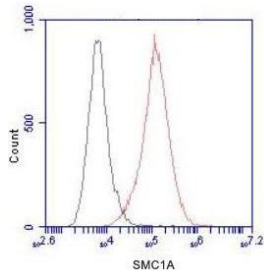
Images



1:1000 dilution of this antibody detected SMC1A on 40ug of cell lysates



IHC of paraffin-embedded human colon using anti-SMC1A (N-terminus) diluted 1:50-1:100



HeLa cells stained with SMC1A (red, 1:100 dilution), followed by FITC-conjugated goat anti-mouse IgG. Black line histogram represents the isotype control, normal mouse IgG

Note: This product is for in vitro research use only