

JunD(Ab-255) Antibody

Catalog No: #21028

Package Size: #21028-1 50ul #21028-2 100ul

Orders: order@signalwayantibody.com

Support: tech@signalwayantibody.com

Description

Product Name	JunD(Ab-255) Antibody
Host Species	Rabbit
Clonality	Polyclonal
Purification	Antibodies were produced by immunizing rabbits with synthetic peptide and KLH conjugates. Antibodies were purified by affinity-chromatography using epitope-specific peptide.
Applications	WB IHC IF
Species Reactivity	Hu Ms Rt
Specificity	The antibody detects endogenous level of total JunD protein.
Immunogen Type	Peptide-KLH
Immunogen Description	Peptide sequence around aa. 253~257 (G-E-S-P-P) derived from Human JunD.
Target Name	JunD
Other Names	AP-1
Accession No.	Swiss-Prot: P17535NCBI Protein: NP_005345.3
Uniprot	P17535
GeneID	3727;
Concentration	1.0mg/ml
Formulation	Supplied at 1.0mg/mL in phosphate buffered saline (without Mg ²⁺ and Ca ²⁺), pH 7.4, 150mM NaCl, 0.02% sodium azide and 50% glycerol.
Storage	Store at -20°C for long term preservation (recommended). Store at 4°C for short term use.

Application Details

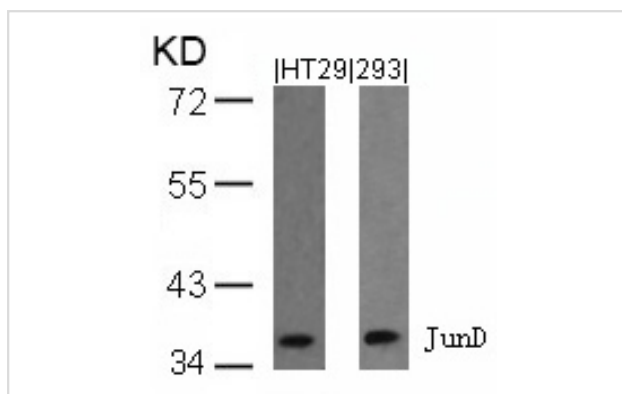
Predicted MW: 38kd

Western blotting: 1:500~1:1000

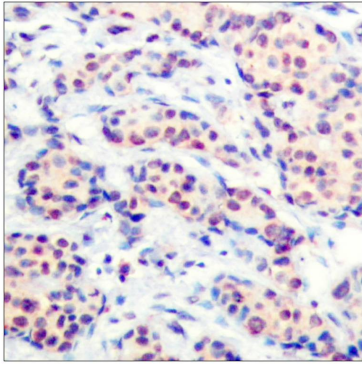
Immunohistochemistry: 1:50~1:100

Immunofluorescence: 1:100~1:200

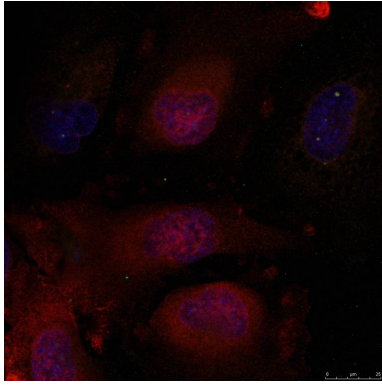
Images



Western blot analysis of extracts from HT29 and 293 cells using JunD(Ab-255) Antibody #21028.



Immunohistochemical analysis of paraffin-embedded human breast carcinoma tissue using JunD(Ab-255) Antibody #21028



Immunofluorescence staining of methanol-fixed HeLa cells using JunD(Ab-255) Antibody #21028.

Background

Binds an AP-1 site and upon cotransfection stimulates the activity of a promoter that bears an AP-1 site.

Beausoleil S A, et al. (2004) Proc Natl Acad Sci U S A. 101(33): 12130-12135.

Note: This product is for in vitro research use only