

ACE Monoclonal Antibody

Catalog No: #27059

Package Size: #27059-1 50ul #27059-2 100ul

Orders: order@signalwayantibody.com

Support: tech@signalwayantibody.com

Description

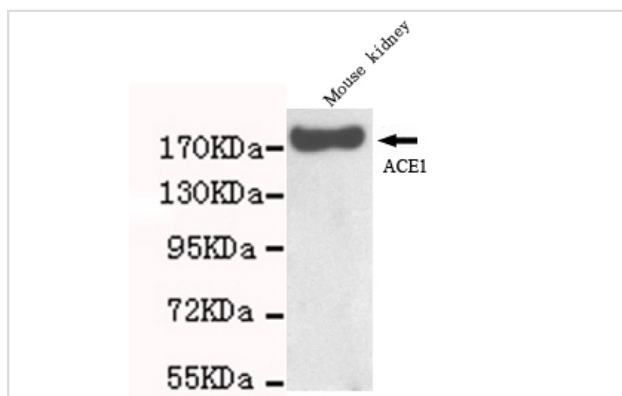
Product Name	ACE Monoclonal Antibody
Host Species	Mouse
Clonality	Monoclonal
Isotype	IgG1
Purification	Purified by antigen-affinity chromatography.
Applications	WB
Species Reactivity	Hu Rt Ms
Immunogen Type	Recombinant protein
Immunogen Description	Recombinant fragment, corresponding to amino acids 198-481aa of human ACE1(N-terminus).
Target Name	ACE
Other Names	angiotensin-converting enzyme <input type="checkbox"/> kininase II <input type="checkbox"/> peptidase P <input type="checkbox"/> CD143 antigen <input type="checkbox"/> testicular ECA <input type="checkbox"/> carboxycathepsin <input type="checkbox"/> dipeptidyl carboxypeptidase 1 <input type="checkbox"/> dipeptidyl carboxypeptidase I <input type="checkbox"/> angiotensin converting enzyme, somatic isoform
Accession No.	UniProt:P12821 NCBI Gene ID:1636
Uniprot	P12821
GeneID	1636;
Formulation	Purified mouse monoclonal in buffer containing 0.1M Tris-Glycine (pH 7.4, 150 mM NaCl) with 0.2% sodium azide, 50%,glycerol
Storage	store at -20°C

Application Details

Predicted MW: 190kd

Western blotting: 1:1000

Images



1:1000 dilution of this antibody detected ACE1 on 40ug of cell lysates

Note: This product is for in vitro research use only