

## CRTC1 Monoclonal Antibody

Catalog No: #27071

Package Size: #27071-1 50ul #27071-2 100ul

Orders: order@signalwayantibody.com

Support: tech@signalwayantibody.com

## Description

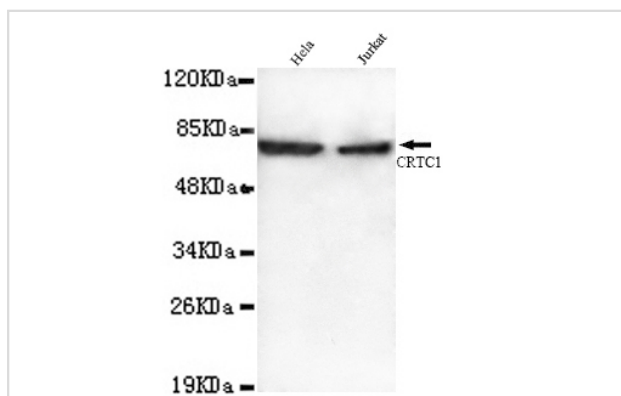
Product Name	CRTC1 Monoclonal Antibody
Host Species	Mouse
Clonality	Monoclonal
Isotype	IgG2b
Purification	Purified by antigen-affinity chromatography.
Applications	WB ICC FC
Species Reactivity	Hu P Ms Rt
Immunogen Type	Recombinant protein
Immunogen Description	Recombinant fragment, corresponding to amino acids 25-228aa of human CRTC1(N-terminus).
Target Name	CRTC1
Other Names	CREB-regulated transcription coactivator 1 □TORC-1 □transducer of CREB protein 1 □mucoepidermoid carcinoma translocated 1 □mucoepidermoid carcinoma translocated protein 1 □transducer of regulated cAMP response element-binding protein 1
Accession No.	UniProt:Q6UUUV9 NCBI Gene ID:23373
Uniprot	Q6UUUV9
GeneID	23373;
Formulation	Purified mouse monoclonal in buffer containing 0.1M Tris-Glycine (pH 7.4, 150 mM NaCl) with 0.2% sodium azide, 50%,glycerol
Storage	store at -20°C

## Application Details

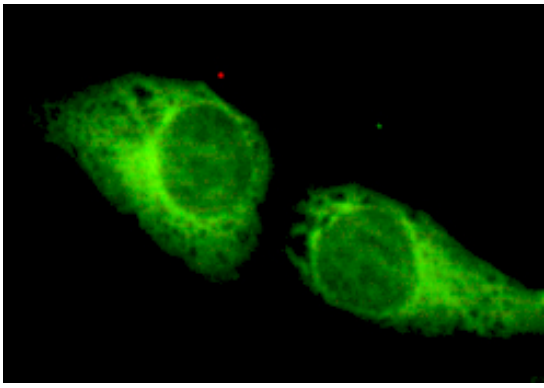
Predicted MW: 69kd

Western blotting: 1:1000

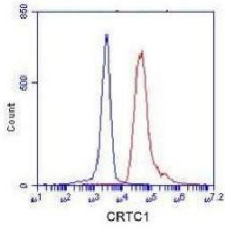
## Images



1:2500 dilution of this antibody detected CRTC1 on 40ug of cell lysates



HeLa cells using anti- CRTC1(N-terminus)antibody diluted 1:150



K562 cells stained with CRTC1 (red, 1/100 dilution), followed by FITC-conjugated goat anti-mouse IgG. Blue line histogram represents the isotype control, normal mouse IgG

---

Note: This product is for in vitro research use only