

SMYD2 Monoclonal Antibody

Catalog No: #27084

Package Size: #27084-1 50ul #27084-2 100ul

Orders: order@signalwayantibody.com

Support: tech@signalwayantibody.com

Description

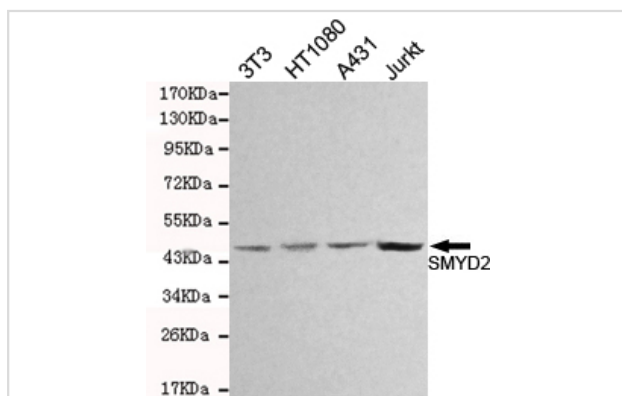
| | |
|-----------------------|---|
| Product Name | SMYD2 Monoclonal Antibody |
| Host Species | Mouse |
| Clonality | Monoclonal |
| Clone No. | 1G10-E11-H9 |
| Isotype | IgG2b |
| Applications | ELISA WB |
| Species Reactivity | Hu Ms |
| Immunogen Type | Recombinant protein |
| Immunogen Description | Purified recombinant human SMYD2 protein fragments expressed in E.coli. |
| Target Name | SMYD2 |
| Other Names | KMT3C, HSKM-B, ZMYND14 |
| Accession No. | Swiss-Prot:Q9NRG4 Gene ID:56950 |
| Uniprot | Q9NRG4 |
| GeneID | 56950; |
| Formulation | ascites |

Application Details

Predicted MW: 50kd

Western blotting: 1:1000

Images



Western blot detection of SMYD2 in 3T3,HT1080

Background

SET domain-containing proteins, such as SMYD2, catalyze lysine methylation. Protein-lysine N-methyltransferase that methylates both histones and non-histone proteins. Specifically methylates histone H3 'Lys-4' (H3K4me) and dimethylates histone H3 'Lys-36' (H3K36me2). Has also methyltransferase activity toward non-histone proteins.

Note: This product is for in vitro research use only