

## PPP1CA Monoclonal Antibody

Catalog No: #27087

Package Size: #27087-1 50ul #27087-2 100ul

Orders: order@signalwayantibody.com

Support: tech@signalwayantibody.com

## Description

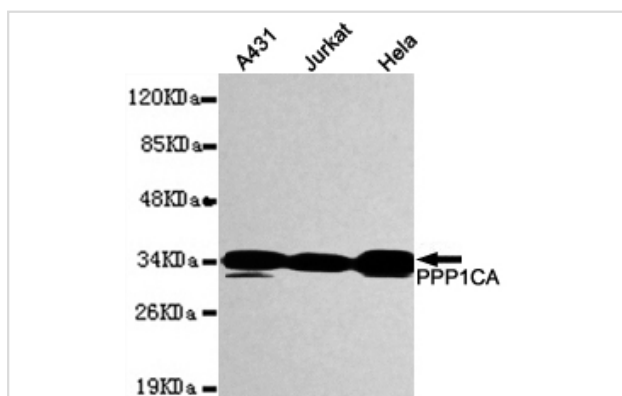
Product Name	PPP1CA Monoclonal Antibody
Host Species	Mouse
Clonality	Monoclonal
Clone No.	1C11-C10-H5-E9
Isotype	IgG1
Purification	Affinity purified
Applications	ELISA WB IHC
Species Reactivity	Hu P Rt Ms Rb
Immunogen Type	Recombinant protein
Immunogen Description	Purified recombinant human PPP1CA protein fragments expressed in E.coli.
Target Name	PPP1CA
Other Names	PP-1A, PPP1A, PP1alpha
Accession No.	Swiss-Prot:P62136Gene ID:5499
Uniprot	P62136
GeneID	5499;
Formulation	Purified mouse monoclonal in buffer containing 0.1M Tris-Glycine (pH 7.4, 150 mM NaCl) with 0.2% sodium azide, 50% glycerol

## Application Details

Predicted MW: 38kd

Western blotting: 1:1000

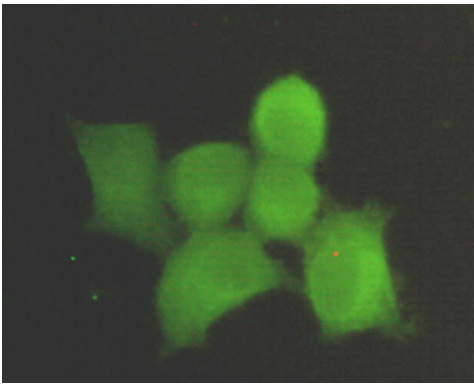
## Images



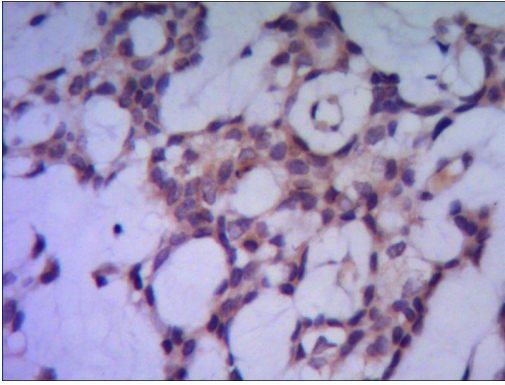
Western blot detection of PPP1CA in MCF7, K562, HeLa, HEPG2 & Jurkat Whole cell lysates using PPP1CA antibody (1:1000 diluted).

Predicted band size: 38KDa

Observed band size: 38KDa



Immunocytochemistry stain of HeLa using PPP1CA antibody (1:300).



IHC of paraffin-embedded human breast cancer using anti-PPP1CA diluted 1/500-1/1000.

## Background

Protein phosphatase 1 (PP1) is essential for cell division, and participates in the regulation of glycogen metabolism, muscle contractility and protein synthesis. Involved in regulation of ionic conductances and long-term synaptic plasticity.

Note: This product is for in vitro research use only