

SMYD1 Monoclonal Antibody

Catalog No: #27088

Package Size: #27088-1 50ul #27088-2 100ul

Orders: order@signalwayantibody.com

Support: tech@signalwayantibody.com

Description

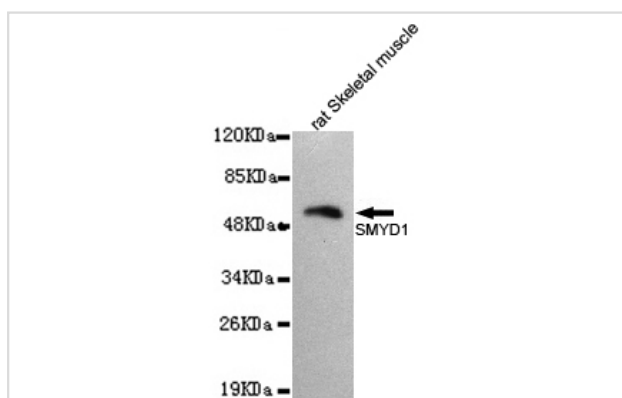
Product Name	SMYD1 Monoclonal Antibody
Host Species	Mouse
Clonality	Monoclonal
Clone No.	2E11-B6-C7
Applications	ELISA WB
Species Reactivity	Hu
Immunogen Type	Recombinant protein
Immunogen Description	Purified recombinant human SMYD1 protein fragments expressed in E.coli.
Target Name	SMYD1
Other Names	BOP, KMT3D, ZMYND18, ZMYND22
Accession No.	Swiss-Prot:Q8NB12Gene ID:150572
Uniprot	Q8NB12
GeneID	150572;
Formulation	ascites

Application Details

Predicted MW: 56kd

Western blotting: 1:1000

Images



Western blot detection of SMYD1 in rat skeletal muscle lysates and using SMYD1 antibody (1:1000 diluted).
Predicted band size: 56KDa Observed band size: 56KDa

Background

Acts as a transcriptional repressor. Essential for cardiomyocyte differentiation and cardiac morphogenesis By similarity.

Note: This product is for in vitro research use only