

CHRDL1 Monoclonal Antibody

Catalog No: #27106

Package Size: #27106-1 50ul #27106-2 100ul

Orders: order@signalwayantibody.com

Support: tech@signalwayantibody.com

Description

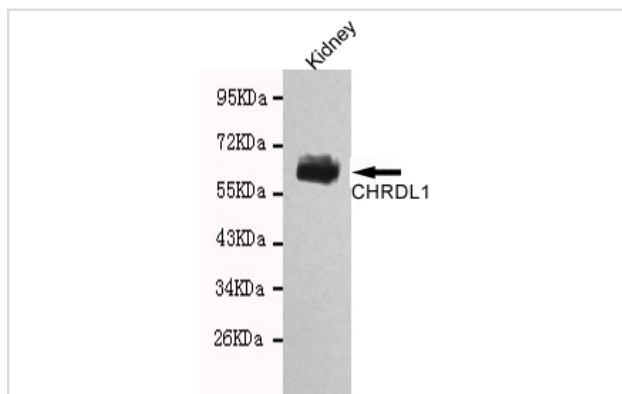
Product Name	CHRDL1 Monoclonal Antibody
Host Species	Mouse
Clonality	Monoclonal
Clone No.	3H1-F6-A10
Isotype	IgG1
Purification	Affinity purified
Applications	ELISA WB
Species Reactivity	Hu Rt
Immunogen Type	Recombinant Protein
Immunogen Description	Purified recombinant human CHRDL1 protein fragments expressed in E.coli.
Target Name	CHRDL1
Other Names	CHL, VOPT, NRLN1, dA141H5.1
Accession No.	Swiss-Prot:P12532Gene ID:1159
Uniprot	Q9BU40
GeneID	91851
Formulation	Purified mouse monoclonal in buffer containing 0.1M Tris-Glycine (pH 7.4, 150 mM NaCl) with 0.2% sodium azide, 50% glycerol

Application Details

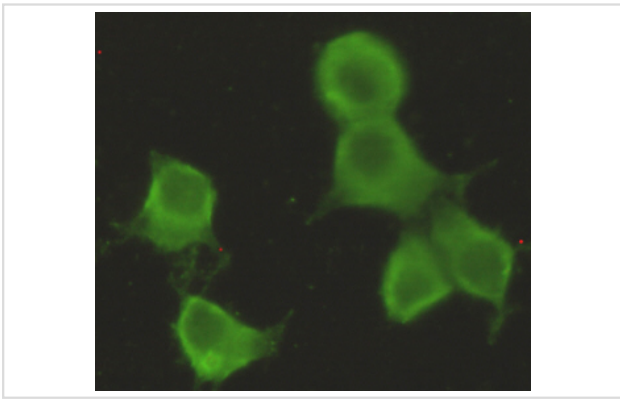
Predicted MW: 57kd

Western blotting: 1:1000

Images



Western blot detection of CHRDL1 in Rat kidney tissue lysates using CHRDL1 antibody (1:1000 diluted).
Predicted band size: 57kDa
Observed band size: 57kDa



Immunocytochemistry stain of HeLa using CHRDL1 antibody (1:300).

Background

This gene encodes an antagonist of bone morphogenetic protein 4. The encoded protein may play a role in topographic retinotectal projection and in the regulation of retinal angiogenesis in response to hypoxia. Antagonizes the function of BMP4 by binding to it and preventing its interaction with receptors. Alters the fate commitment of neural stem cells from gliogenesis to neurogenesis. Contributes to neuronal differentiation of neural stem cells in the brain.

Note: This product is for in vitro research use only