

## CKMT1 Monoclonal Antibody

Catalog No: #27110

Package Size: #27110-1 50ul #27110-2 100ul

Orders: order@signalwayantibody.com

Support: tech@signalwayantibody.com

## Description

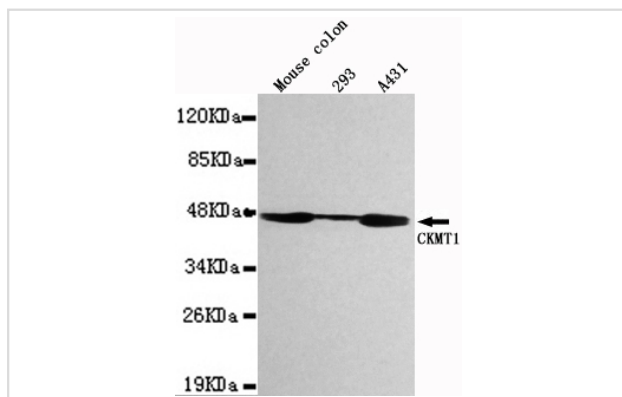
Product Name	CKMT1 Monoclonal Antibody
Host Species	Mouse
Clonality	Monoclonal
Clone No.	1A6-C7-G10
Isotype	IgG1
Purification	Affinity purified
Applications	ELISA WB
Species Reactivity	Hu Ms
Immunogen Type	Recombinant Protein
Immunogen Description	Purified recombinant human CKMT1 protein fragments expressed in E.coli.
Target Name	CKMT1
Other Names	CKMT, CKMT1, UMTCK, CKMT1A
Accession No.	Swiss-Prot:P12532Gene ID:1159
Uniprot	P12532
GeneID	1159;
Formulation	Purified mouse monoclonal in buffer containing 0.1M Tris-Glycine (pH 7.4, 150 mM NaCl) with 0.2% sodium azide, 50%,glycerol

## Application Details

Predicted MW: 47kd

Western blotting: 1:1000

## Images



Western blot detection of CKMT1 in Mouse Colon,293&A431 cell lysates using CKMT1 antibody (1:1000 diluted).  
 Predicted band size:47KDa  
 Observed band size:47KDa.

## Background

Mitochondrial creatine (MtCK) kinase is responsible for the transfer of high energy phosphate from mitochondria to the cytosolic carrier, creatine.

Reversibly catalyzes the transfer of phosphate between ATP and various phosphogens (e.g. creatine phosphate). Creatine kinase isoenzymes play a central role in energy transduction in tissues with large, fluctuating energy demands, such as skeletal muscle.

---

Note: This product is for in vitro research use only