

CALU-C Monoclonal Antibody

Catalog No: #27116

Package Size: #27116-1 50ul #27116-2 100ul

Orders: order@signalwayantibody.com

Support: tech@signalwayantibody.com

Description

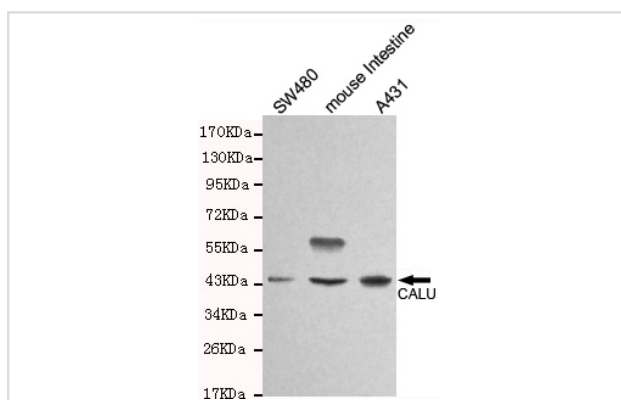
| | |
|-----------------------|---|
| Product Name | CALU-C Monoclonal Antibody |
| Host Species | Mouse |
| Clonality | Monoclonal |
| Clone No. | 4C6-G10-B12 |
| Isotype | IgG1 |
| Purification | Affinity purified |
| Applications | ELISA WB |
| Species Reactivity | Hu Ms Rt |
| Immunogen Type | Recombinant protein |
| Immunogen Description | Purified recombinant human CALU(C-terminus) protein fragments expressed in E.coli. |
| Target Name | CALU-C |
| Accession No. | Swiss-Prot:P10515Gene ID:1737 |
| Uniprot | P10515 |
| GeneID | 1737; |
| Formulation | Purified mouse monoclonal in buffer containing 0.1M Tris-Glycine (pH 7.4, 150 mM NaCl) with 0.2% sodium azide, 51% glycerol |

Application Details

Predicted MW: 37kd

Western blotting: 1:1000

Images



Western blot detection of CALU in SW480

Background

The product of this gene is a calcium-binding protein localized in the endoplasmic reticulum (ER) and it is involved in such ER functions as protein folding and sorting. Involved in regulation of vitamin K-dependent carboxylation of multiple N-terminal glutamate residues. Seems to inhibit

gamma-carboxylase GGCX.

Note: This product is for in vitro research use only