

DLAT Monoclonal Antibody

Catalog No: #27119

Package Size: #27119-1 50ul #27119-2 100ul

Orders: order@signalwayantibody.com

Support: tech@signalwayantibody.com

Description

Product Name	DLAT Monoclonal Antibody
Host Species	Mouse
Clonality	Monoclonal
Clone No.	4A4-B6-C10
Isotype	IgG1
Purification	Affinity purified
Applications	ELISA WB ICC IP
Species Reactivity	Hu Ms
Immunogen Type	Recombinant Protein
Immunogen Description	Purified recombinant human DLAT protein fragments expressed in E.coli.
Target Name	DLAT
Other Names	DLTA, PDCE2, PDC-E2
Accession No.	Swiss-Prot:O15379Gene ID:8841
Uniprot	O15379
GeneID	8841;
Formulation	Purified mouse monoclonal in buffer containing 0.1M Tris-Glycine (pH 7.4, 150 mM NaCl) with 0.2% sodium azide, 50%,glycerol

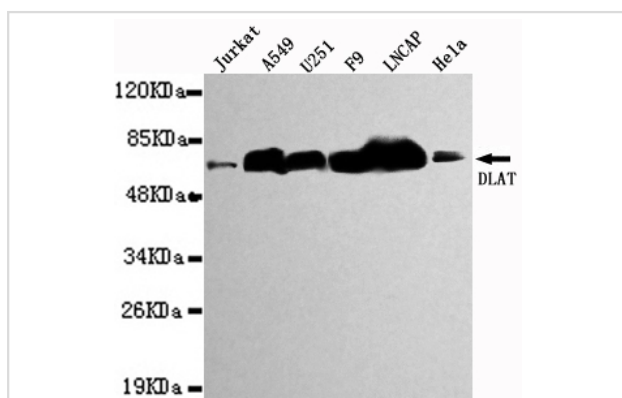
Application Details

Predicted MW: 69kd

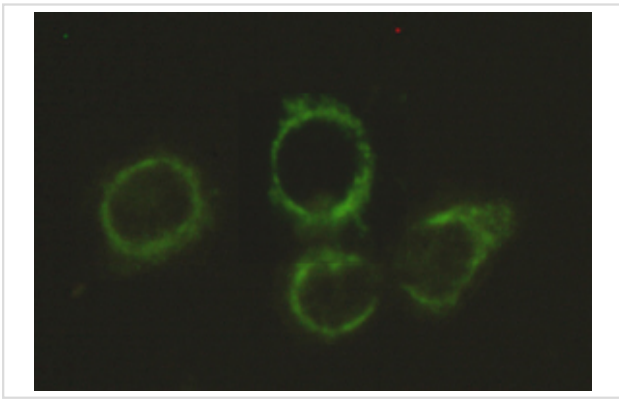
Western blotting: 1:1000

Immunocytochemistry:1:300

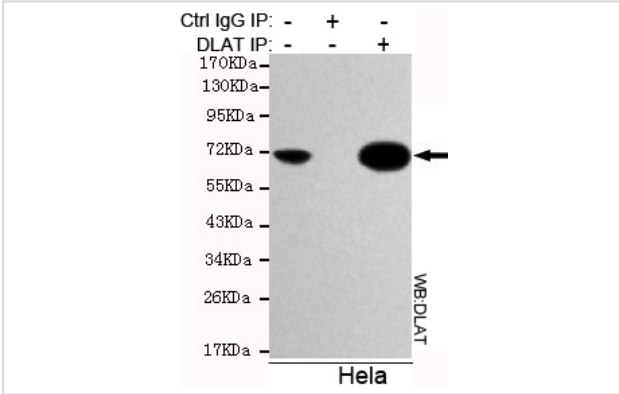
Images



Western blot detection of DLAT in Jurkat,A549,U251,F9,LNCAP&Hela cell lysates using DLAT antibody (1:1000 diluted).
 Predicted band size:69KDa.
 Observed band size:69KDa



Immunocytochemistry stain of HeLa using DLAT antibody (1:300).



Immunoprecipitation analysis of HeLa cell lysates using DLAT antibody

Background

This gene encodes component E2 of the multi-enzyme pyruvate dehydrogenase complex (PDC). PDC resides in the inner mitochondrial membrane and catalyzes the conversion of pyruvate to acetyl coenzyme A. The pyruvate dehydrogenase complex catalyzes the overall conversion of pyruvate to acetyl-CoA and CO₂. It contains multiple copies of three enzymatic components.

Note: This product is for in vitro research use only