

His-Tag Mouse Monoclonal Antibody

Catalog No: #T505



Package Size: #T505-1 50ul #T505-2 100ul

Orders: order@signalwayantibody.com

Support: tech@signalwayantibody.com

Description

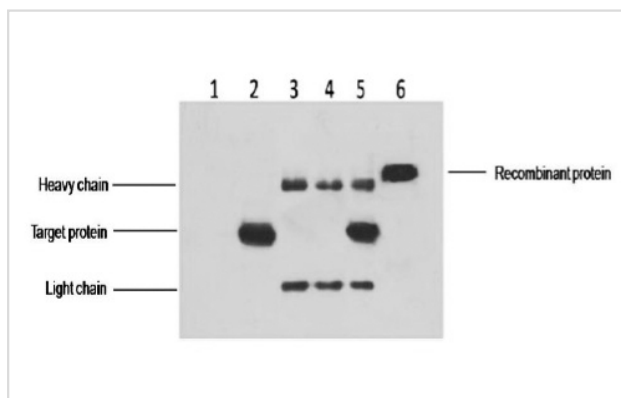
Product Name	His-Tag Mouse Monoclonal Antibody
Host Species	Mouse
Clonality	Monoclonal
Purification	Affinity-chromatography
Applications	WB IF/ICC
Specificity	His-Tag Mouse Monoclonal antibody detects endogenous levels of internal, C-terminal, or N-terminal 6His-tagged proteins.
Immunogen Type	Peptide-KLH
Immunogen Description	A synthetic peptide HHHHHH coupled to KLH.
Target Name	His-Tag
SDS-PAGE MW	N/A
Formulation	Mouse IgG1 in phosphate buffered saline (without Mg ²⁺ and Ca ²⁺), pH 7.4, 150mM NaCl, 0.02% sodium azide and 50% glycerol.
Storage	Store at -20 °C. Stable for 12 months from date of receipt

Application Details

WB: 1:3000~1:10000

IF/ICC: 1:200

Images



IP antibody used 5ug His Mouse IgG1 per ml
 Lysate used WB 1:3000
 1y untransfected 293 cell lysate
 2y transfected 293 cell lysate with His-tag fusion protein
 3y IP (untransfected 293+anti-His mAb+ Protein G agarose)
 4y IP (transfected 293+ normal Mouse IgG+Protein G agarose)
 5y IP (transfected 293+anti-His mAb+ Protein G agarose)
 6y Recombinant protein (E.coli)

Note: This product is for in vitro research use only