

STAT5a(Ab-694) Antibody

Catalog No: #21048

Package Size: #21048-1 50ul #21048-2 100ul

Orders: order@signalwayantibody.com

Support: tech@signalwayantibody.com

Description

Product Name	STAT5a(Ab-694) Antibody
Host Species	Rabbit
Clonality	Polyclonal
Purification	Antibodies were produced by immunizing rabbits with synthetic peptide and KLH conjugates. Antibodies were purified by affinity-chromatography using epitope-specific peptide.
Applications	WB IHC
Species Reactivity	Hu Ms Rt
Specificity	The antibody detects endogenous level of total STAT5A protein.
Immunogen Type	Peptide-KLH
Immunogen Description	Peptide sequence around aa. 692~696 (D-G-Y-V-K) derived from Human STAT5A.
Target Name	STAT5a
Other Names	MGF, MPF, Mammary gland factor, STA5A, STAT5
Accession No.	Swiss-Prot: P42229NCBI Protein: NP_003143.2
Uniprot	P42229
GeneID	6776;
Concentration	1.0mg/ml
Formulation	Supplied at 1.0mg/mL in phosphate buffered saline (without Mg ²⁺ and Ca ²⁺), pH 7.4, 150mM NaCl, 0.02% sodium azide and 50% glycerol.
Storage	Store at -20°C for long term preservation (recommended). Store at 4°C for short term use.

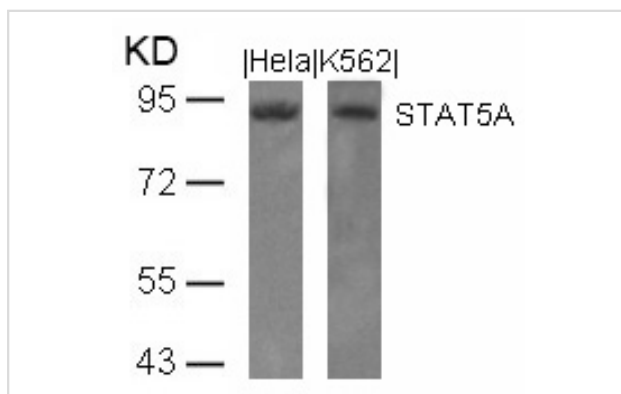
Application Details

Predicted MW: 90kd

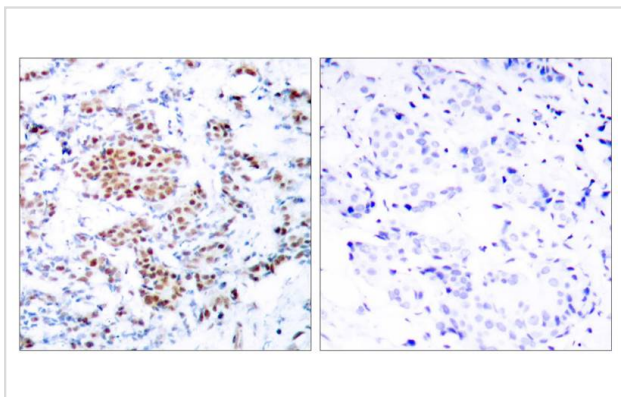
Western blotting: 1:500~1:1000

Immunohistochemistry: 1:50~1:100

Images



Western blot analysis of extracts from HeLa and K562 cells using STAT5A(Ab-694) Antibody #21048.



Immunohistochemical analysis of paraffin-embedded human breast carcinoma tissue using STAT5A(Ab-694) Antibody #21048(left) or the same antibody preincubated with blocking peptide(right).

Background

Carries out a dual function: signal transduction and activation of transcription. Binds to the GAS element and activates PRL-induced transcription.

Gouilleux F, et al. (1994) EMBO J. 13: 4361-4369.

Dentelli P, et al. (1999) J Immunol. 163: 2151-2159.

Meinke A, et al. (1996) Mol Cell Biol. 16: 6937-6944.

Note: This product is for in vitro research use only