

Estrogen Receptor- $\alpha$  Antibody

Catalog No: #21066

Package Size: #21066-1 50ul #21066-2 100ul

Orders: order@signalwayantibody.com

Support: tech@signalwayantibody.com

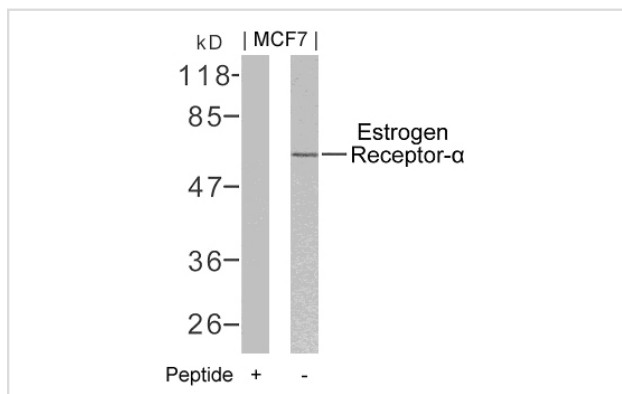
## Description

Product Name	Estrogen Receptor- $\alpha$ Antibody
Host Species	Rabbit
Clonality	Polyclonal
Purification	Antibodies were produced by immunizing rabbits with synthetic peptide and KLH conjugates. Antibodies were purified by affinity-chromatography using epitope-specific peptide.
Applications	WB;IHC;IF
Species Reactivity	Hu Ms Rt
Specificity	ER $\alpha$ Polyclonal Antibody detects endogenous levels of ER $\alpha$ protein.
Immunogen Type	Peptide-KLH
Immunogen Description	The antiserum was produced against synthesized peptide derived from human Estrogen Receptor- $\alpha$ .
Target Name	Estrogen Receptor- $\alpha$
Other Names	ER; ESR; ESR1; ESTR; ESTRA
Accession No.	Swiss-Prot: P03372NCBI Protein: NP_000116.2
Uniprot	P03372
GeneID	2099;
Concentration	1.0mg/ml
Formulation	Liquid in PBS containing 50% glycerol, 0.5% BSA and 0.02% sodium azide.
Storage	Store at -20°C for long term preservation (recommended). Store at 4°C for short term use.

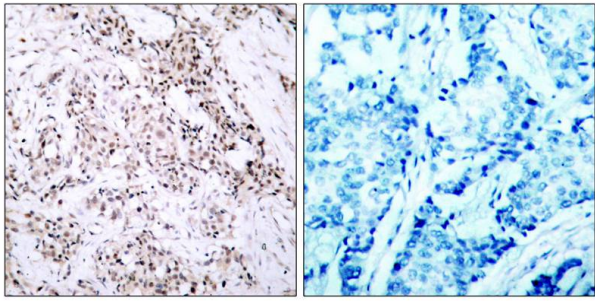
## Application Details

WB 1:500 - 1:2000. IHC 1:100 - 1:300. IF 1:200 - 1:1000.

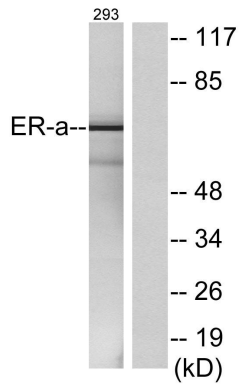
## Images



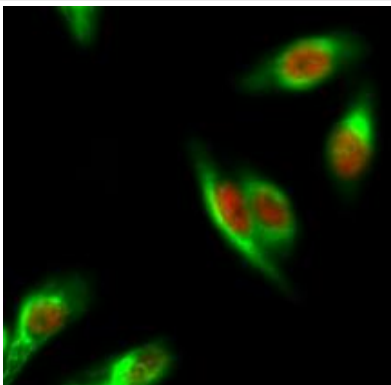
Western blot analysis of extracts from MCF7 cells using Estrogen Receptor- $\alpha$ (Ab-106) Antibody #21066 and the same antibody preincubated with blocking peptide.



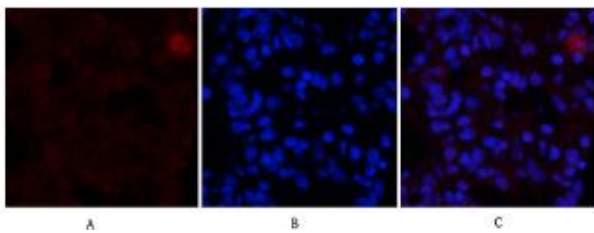
Immunohistochemical analysis of paraffin-embedded human breast carcinoma tissue using Estrogen Receptor-a(Ab-106) Antibody #21066(left) or the same antibody preincubated with blocking peptide(right).



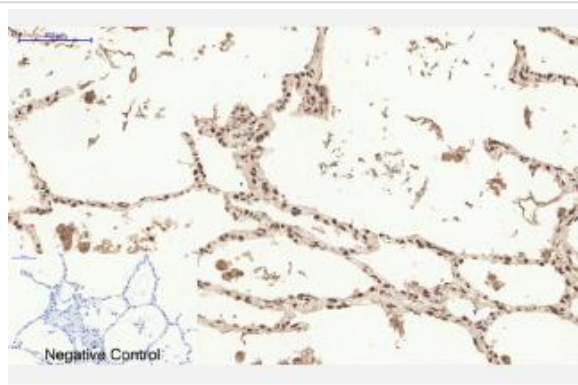
Western blot analysis of lysates from 293 cells, using Estrogen Receptor-alpha Antibody. The lane on the right is blocked with the synthesized peptide.



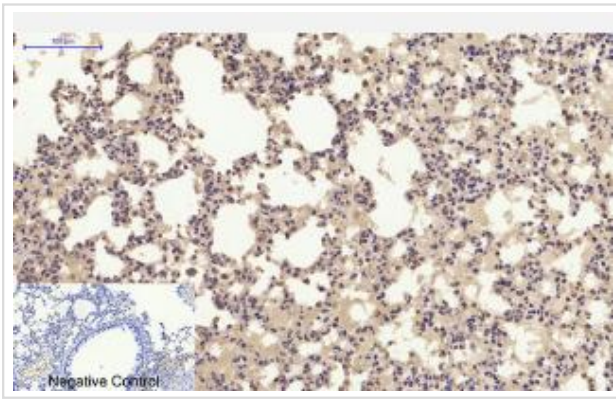
Immunofluorescence analysis of HeLa cell.



Immunofluorescence analysis of rat-lung tissue.



Immunohistochemical analysis of paraffin-embedded Human-lung tissue.



Immunohistochemical analysis of paraffin-embedded Mouse-lung tissue.

## Background

Nuclear hormone receptor. The steroid hormones and their receptors are involved in the regulation of eukaryotic gene expression and affect cellular proliferation and differentiation in target tissues.

Medunjanin S, et al. (2005). *J Biol Chem.*80 (38):33006-33014.

Dutertre M, et al. (2003). *Mol Endocrinol.*17 (7): 1296-1314.

Chen D, et al. (2000). *Mol Cell.*6 (1): 127-137.

Rogatsky I, et al. (1999). *J Biol Chem.*274 (32): 22296-22302.

Note: This product is for in vitro research use only