

HER2(Ab-1221/1222) Antibody

Catalog No: #21071

Package Size: #21071-1 50ul #21071-2 100ul

Orders: order@signalwayantibody.com

Support: tech@signalwayantibody.com

Description

| | |
|-----------------------|---|
| Product Name | HER2(Ab-1221/1222) Antibody |
| Host Species | Rabbit |
| Clonality | Polyclonal |
| Purification | Antibodies were produced by immunizing rabbits with synthetic peptide and KLH conjugates. Antibodies were purified by affinity-chromatography using epitope-specific peptide. |
| Applications | WB IHC IF |
| Species Reactivity | Hu |
| Specificity | The antibody detects endogenous level of total HER2 protein. |
| Immunogen Type | Peptide-KLH |
| Immunogen Description | Peptide sequence around aa.1219~1223/1220~1224 (N-L-Y-Y -W) derived from Human HER2. |
| Target Name | HER2 |
| Other Names | C-erbB-2; ErbB2; |
| Accession No. | Swiss-Prot: P04626NCBI Protein: NP_001005862.1 |
| Uniprot | P04626 |
| GeneID | 2064; |
| Concentration | 1.0mg/ml |
| Formulation | Supplied at 1.0mg/mL in phosphate buffered saline (without Mg ²⁺ and Ca ²⁺), pH 7.4, 150mM NaCl, 0.02% sodium azide and 50% glycerol. |
| Storage | Store at -20°C for long term preservation (recommended). Store at 4°C for short term use. |

Application Details

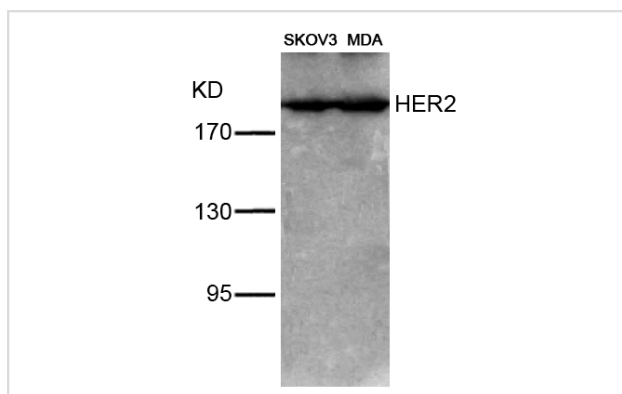
Predicted MW: 185kd

Western blotting: 1:500~1:1000

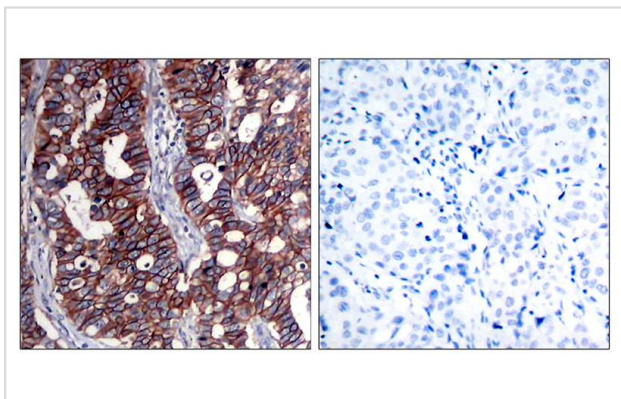
Immunohistochemistry: 1:50~1:100

Immunofluorescence: 1:100~1:200

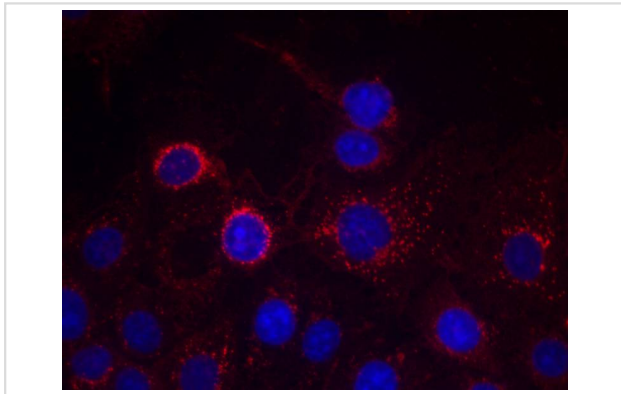
Images



Western blot analysis of extracts from SKOV3 and MDA cells using HER2(Ab-1221/1222) Antibody #21071.



Immunohistochemical analysis of paraffin-embedded human breast carcinoma tissue using HER2(Ab-1221/1222) Antibody #21071(left) or the same antibody preincubated with blocking peptide(right).



Immunofluorescence staining of methanol-fixed MCF cells using HER2(Ab-1221/1222) Antibody #21071.

Background

Essential component of a neuregulin-receptor complex, although neuregulins do not interact with it alone. GP30 is a potential ligand for this receptor.

Not activated by EGF, TGF- α and amphiregulin.

Marone R, et al. (2004) *Nat Cell Biol*; 6(6): 515-22.

Ren Z, et al. (2002) *J Biol Chem*; 277(41): 38486-93.

Ouyang X, et al. (1998) *Carcinogenesis*; 19(11): 2013-9.

Ouyang X, et al. (1998) *Exp Cell Res*; 241(2): 467-75.

Klapper, L. N. et al. (2000) *Cancer Res*. 60, 3384-3388.

Note: This product is for in vitro research use only