

## Ki67 Antibody

Catalog No: #29020

Package Size: #29020-1 50ul #29020-2 100ul

Orders: [order@signalwayantibody.com](mailto:order@signalwayantibody.com)Support: [tech@signalwayantibody.com](mailto:tech@signalwayantibody.com)

## Description

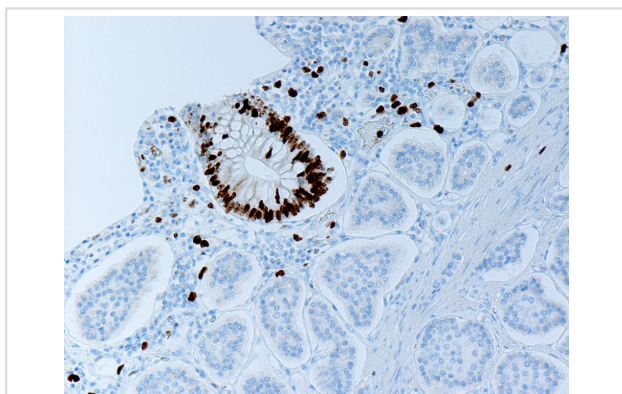
Product Name	Ki67 Antibody
Host Species	Rabbit
Clonality	Polyclonal
Purification	Immunogen affinity purified
Applications	IHC IF/ICC
Species Reactivity	Hu
Specificity	Ki67 Antibody detects endogenous levels of Ki67
Immunogen Type	Peptide
Immunogen Description	A synthesized peptide derived from human Ki67
Target Name	Ki67
Other Names	antigen identified by monoclonal antibody Ki-67; Antigen KI-67; KI67; KIA; MKI67; proliferation-related Ki-67 antigen
Accession No.	Swiss-Prot#: P46013
Uniprot	P46013
GeneID	4288;
SDS-PAGE MW	358KD
Concentration	1.0mg/ml
Formulation	Rabbit IgG in phosphate buffered saline , pH 7.4, 150mM NaCl, 0.02% sodium azide and 50% glycerol.
Storage	Store at -20°C/1 year

## Application Details

IHC: 1:50-1:200

IF/ICC: 1:100-1:500

## Images



## Background

---

KI-67 a protein that may be a marker of proliferating cells, involved in chromatin compaction. Its expression is altered in many tumor types including osteosarcomas, histiocytomas, prostate, breast and esophageal cancers. Mutated in colon, cervical and lung cancers.

---

Note: This product is for in vitro research use only