

## Caveolin-2 Antibody?

Catalog No: #21687

Package Size: #21687-1 50ul #21687-2 100ul

Orders: [order@signalwayantibody.com](mailto:order@signalwayantibody.com)Support: [tech@signalwayantibody.com](mailto:tech@signalwayantibody.com)

## Description

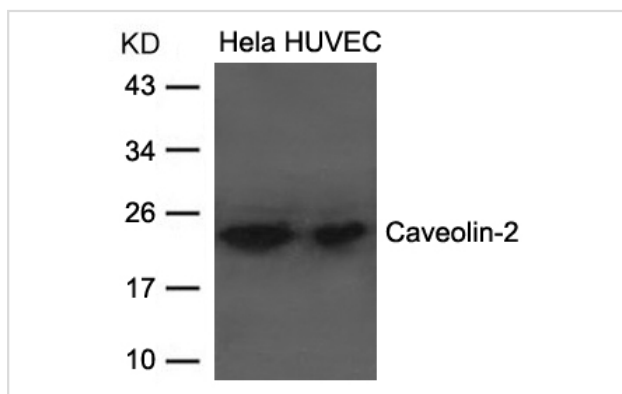
Product Name	Caveolin-2 Antibody?
Host Species	Rabbit
Clonality	Polyclonal
Applications	WB
Species Reactivity	Hu
Specificity	The antibody detects endogenous level of total Caveolin-2 protein.
Immunogen Type	Peptide-KLH
Immunogen Description	Antibodies were produced by immunizing rabbits with synthetic peptide and KLH conjugates. Antibodies were purified by affinity-chromatography using epitope-specific peptide.
Target Name	Caveolin-2
Other Names	CAV,
Accession No.	Swiss-Prot:P51636Gene ID:858
Uniprot	P51636
GeneID	858;
Concentration	1.0mg/ml

## Application Details

Predicted MW: 18 22kd

Western Blot: 1:500~1000

## Images



Western blot analysis of extracts from HeLa and HUVEC cells using Caveolin-2 Antibody #21687.

## Background

May act as a scaffolding protein within caveolar membranes. Interacts directly with G-protein alpha subunits and can functionally regulate their activity. Acts as an accessory protein in conjunction with CAV1 in targeting to lipid rafts and driving caveolae formation. The Ser-36 phosphorylated form has a role in modulating mitosis in endothelial cells. Positive regulator of cellular mitogenesis of the MAPK signaling pathway. Required for the

insulin-stimulated nuclear translocation and activation of MAPK1 and STAT3, and the subsequent regulation of cell cycle progression.

---

Note: This product is for in vitro research use only