

RhoA antibody

Catalog No: #25545

Orders: order@signalwayantibody.comSupport: tech@signalwayantibody.com

Description

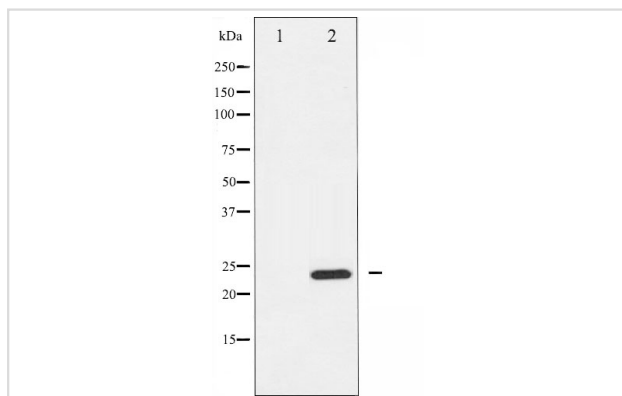
Product Name	RhoA antibody
Host Species	Rabbit
Clonality	Polyclonal
Purification	Immunogen affinity purified
Applications	WB IHC
Species Reactivity	Hu Ms Rt
Specificity	RhoA Antibody detects endogenous levels of total RhoA
Immunogen Type	Peptide
Immunogen Description	A synthesized peptide derived from human RhoA
Target Name	RhoA
Other Names	ARH12, ARHA, ARHA2, H12, RHO12, Transforming protein RhoA
Accession No.	Swiss-Prot#: P61586
Uniprot	P61586
GeneID	387;
SDS-PAGE MW	22KD
Concentration	1mg/ml
Formulation	Rabbit IgG in phosphate buffered saline , pH 7.4, 150mM NaCl, 0.02% sodium azide and 50% glycerol.
Storage	Store at -20°C/1 year

Application Details

WB: 1:500-1:2000

IHC: 1:50-1:200

Images



Western blot analysis of RhoA expression in HeLa whole cell lysates. The lane on the left is treated with the antigen-specific peptide.

Background

RhoA is a small G protein of the Rho family. Regulates a signal transduction pathway linking plasma membrane receptors to the assembly of focal

adhesions and actin stress fibers.

Note: This product is for in vitro research use only