

CX3CR1 Antibody FITC Conjugated

Catalog No: #C03660F

Orders: order@signalwayantibody.com

Support: tech@signalwayantibody.com

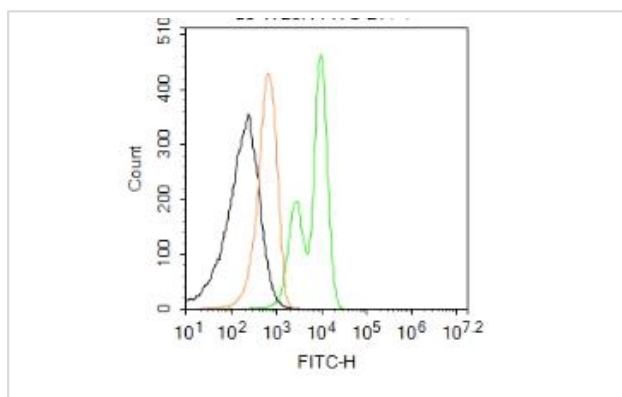
Description

Product Name	CX3CR1 Antibody FITC Conjugated
Host Species	Rabbit
Clonality	Polyclonal
Isotype	IgG
Purification	Purified by Protein A.
Applications	Flow-Cyt IF
Species Reactivity	Ms Rt
Immunogen Description	KLH conjugated synthetic peptide derived from human CX3CR1
Conjugates	FITC
Target Name	CX3CR1
Other Names	V28; CCRL1; GPR13; CMKDR1; GPRV28; CMKBRL1; CX3C chemokine receptor 1; C-X3-C CKR-1; CX3CR1; Beta chemokine receptor-like 1; CMK-BRL-1; CMK-BRL1; Fractalkine receptor; G-protein coupled receptor 13
Accession No.	Swiss-Prot#P49238NCBI Gene ID1524
Uniprot	P49238
GeneID	1524;
Excitation Emission	494nm 518nm
Cell Localization	Cell membrane; Multi-pass membrane protein.
Concentration	1mg ml
Formulation	0.01M TBS(pH7.4) with 1% BSA, 0.03% Proclin300 and 50% Glycerol.
Storage	Shipped at 4°C. Store at -20°C for one year. Avoid repeated freeze/thaw cycles.

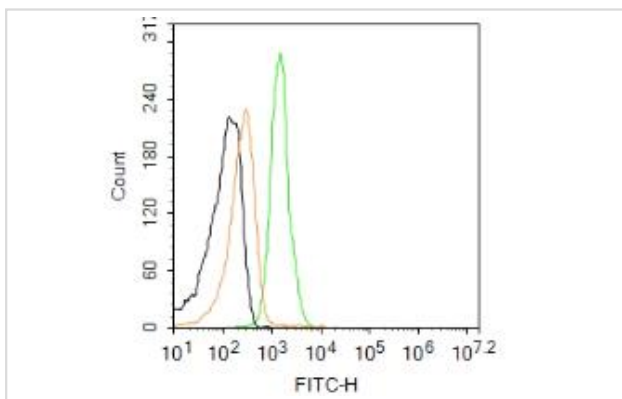
Application Details

Flow-Cyt=2ug/Test

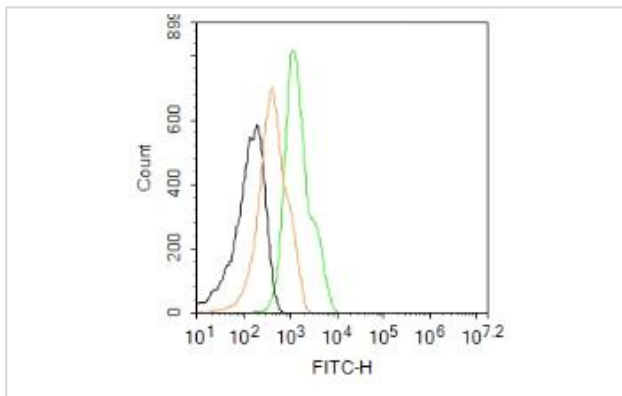
Images



Blank control:U937.Primary Antibody (green line): Rabbit Anti-CX3CR1 antibodyDilution: 2E0g /10^6 cells;Isotype Control Antibody (orange line): Rabbit IgG .ProtocolThe cells were fixed with 4% PFA (10min at room temperature)and then permeabilized with 90% ice-cold methanol for 20 min at-20°C.The cells were then incubated in 5%BSA to block non-specific protein-protein interactions for 30 min at room temperature .Cells stained with Primary Antibody for 30 min at room temperature. Acquisition of 20,000 events was performed.



Blank control: THP-1. Primary Antibody (green line): Rabbit Anti-CX3CR1 antibody Dilution: 2 \times 10⁻⁶ cells; Isotype Control Antibody (orange line): Rabbit IgG . Protocol The cells were fixed with 4% PFA (10min at room temperature)and then permeabilized with 90% ice-cold methanol for 20 min at -20°C. The cells were then incubated in 5%BSA to block non-specific protein-protein interactions for 30 min at room temperature .Cells stained with Primary Antibody for 30 min at room temperature. Acquisition of 20,000 events was performed.



Blank control:U251.Primary Antibody (green line): Rabbit Anti-CX3CR1 antibodyDilution: 2 \times 10⁻⁶ cells;Isotype Control Antibody (orange line): Rabbit IgG .ProtocolThe cells were fixed with 4% PFA (10min at room temperature)and then permeabilized with 90% ice-cold methanol for 20 min at -20°C. The cells were then incubated in 5%BSA to block non-specific protein-protein interactions for 30 min at room temperature .Cells stained with Primary Antibody for 30 min at room temperature. Acquisition of 20,000 events was performed.

Background

Receptor for the CX3C chemokine fractalkine and mediates both its adhesive and migratory functions. Acts as coreceptor with CD4 for HIV-1 virus envelope protein (in vitro). Isoform 2 and isoform 3 seem to be more potent HIV-1 coreceptors than isoform 1.

Note: This product is for in vitro research use only