

mCherry-Tag Mouse Monoclonal Antibody

Catalog No: #T602

Orders: order@signalwayantibody.comSupport: tech@signalwayantibody.com

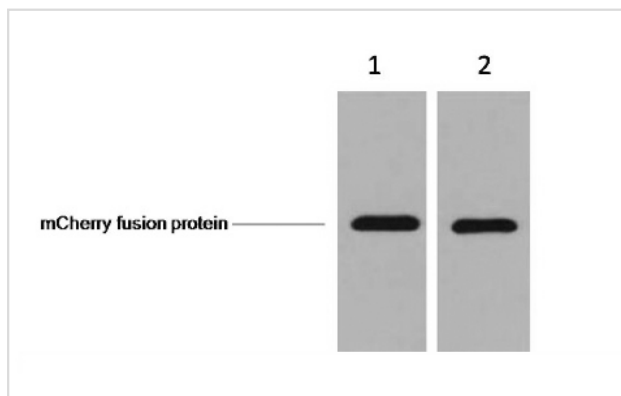
Description

Product Name	mCherry-Tag Mouse Monoclonal Antibody
Host Species	Mouse
Clonality	Monoclonal
Purification	Affinity-chromatography
Applications	WB
Specificity	mCherry-Tag mouse monoclonal antibody detects endogenous levels of internal, C-terminal, and N-terminal mCherry -tagged recombinant proteins.
Immunogen Type	Recombinant Protein
Immunogen Description	Full length mCherry protein.
Target Name	mCherry-Tag
SDS-PAGE MW	N/A
Concentration	1.0mg/ml
Formulation	Liquid in PBS containing 50% glycerol, 0.5% BSA and 0.02% sodium azide.
Storage	Store at -20 °C.Stable for 12 months from date of receipt

Application Details

WB: 1:3000~1:10000

Images



Western blot analysis of mCherry-Tag Mouse Monoclonal antibody expression in mCherry fusion protein sample

Note: This product is for in vitro research use only