

Paxillin(Ab-118) Antibody

Catalog No: #21107

Package Size: #21107-1 50ul #21107-2 100ul

Orders: order@signalwayantibody.com

Support: tech@signalwayantibody.com

Description

Product Name	Paxillin(Ab-118) Antibody
Host Species	Rabbit
Clonality	Polyclonal
Purification	Antibodies were produced by immunizing rabbits with synthetic peptide and KLH conjugates. Antibodies were purified by affinity-chromatography using epitope-specific peptide.
Applications	WB IHC
Species Reactivity	Hu Ms Rt
Specificity	The antibody detects endogenous level of total Paxillin protein.
Immunogen Type	Peptide-KLH
Immunogen Description	Peptide sequence around aa. 116~120 (H-V-Y-S-F) derived from Human Paxillin.
Target Name	Paxillin
Other Names	FLJ16691; PXN;
Accession No.	Swiss-Prot: P49023NCBI Protein: NP_001074324.1
Uniprot	P49023
GeneID	5829;
Concentration	1.0mg/ml
Formulation	Supplied at 1.0mg/mL in phosphate buffered saline (without Mg ²⁺ and Ca ²⁺), pH 7.4, 150mM NaCl, 0.02% sodium azide and 50% glycerol.
Storage	Store at -20°C for long term preservation (recommended). Store at 4°C for short term use.

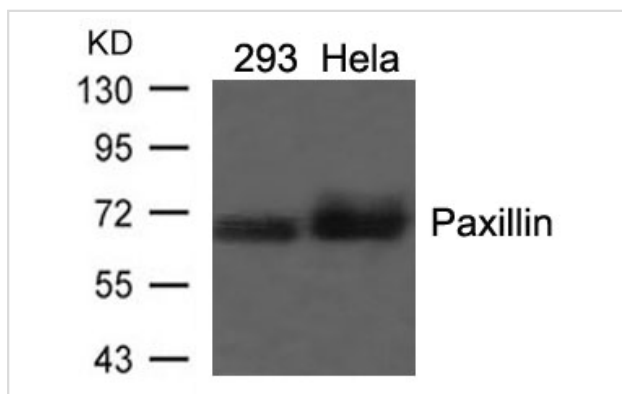
Application Details

Predicted MW: 68kd

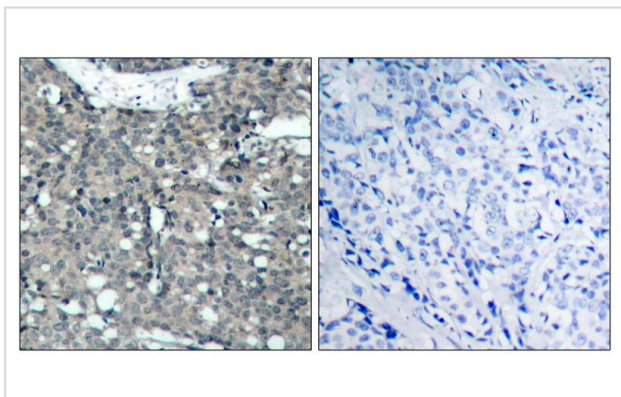
Western blotting: 1:500~1:1000

Immunohistochemistry: 1:50~1:100

Images



Western blot analysis of extracts from 293 and HeLa cells using Paxillin(Ab-118) Antibody #21107.



Immunohistochemical analysis of paraffin-embedded human breast carcinoma tissue using Paxillin(Ab-118) Antibody #21107(left) or the same antibody preincubated with blocking peptide(right).

Background

Cytoskeletal protein involved in actin-membrane attachment at sites of cell adhesion to the extracellular matrix (focal adhesion).

Tao WA, et al.(2005)Nat Methods.2(8): 591-598.

Zhang Y, et al.(2005) Mol Cell Proteomics.4(9): 1240-1250.

Sanders MA, et al.(2005)J Biol Chem.280(25): 23516-23522.

Rush J, et al.(2004) Nat Biotechnol. 23(1): 94-101.

Note: This product is for in vitro research use only