

## AGR2 Antibody

Catalog No: #31005

Package Size: #31005-1 50ul #31005-2 100ul

Orders: order@signalwayantibody.com

Support: tech@signalwayantibody.com

## Description

Product Name	AGR2 Antibody
Host Species	Rabbit
Clonality	Polyclonal
Applications	ELISA WB IHC
Species Reactivity	Hu Ms
Specificity	The antibody detects endogenous level of total AGR2 protein.
Immunogen Type	Recombinant Protein
Immunogen Description	Full length fusion protein
Target Name	AGR2
Other Names	Anterior gradient protein 2 homolog, AG2, GOB-4, HAG-2, XAG-2, PDIA17
Accession No.	Swiss-Prot:O95994Gene ID:10551;
Uniprot	O95994
GeneID	10551;
Formulation	Rabbit IgG in pH7.4 PBS, 0.05% NaN <sub>3</sub> , 40% Glycerol.
Storage	Store at -20°C/1 year

## Application Details

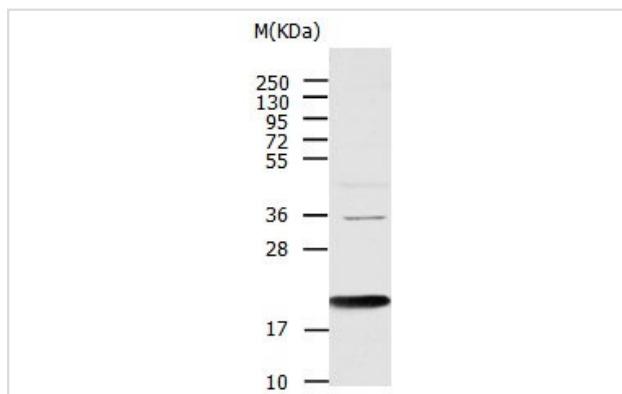
Predicted MW: 20kd

ELISA: 1:1000-1:10000

Western blotting: 1:1000-1:5000

Immunohistochemistry: 1:10-1:50

## Images



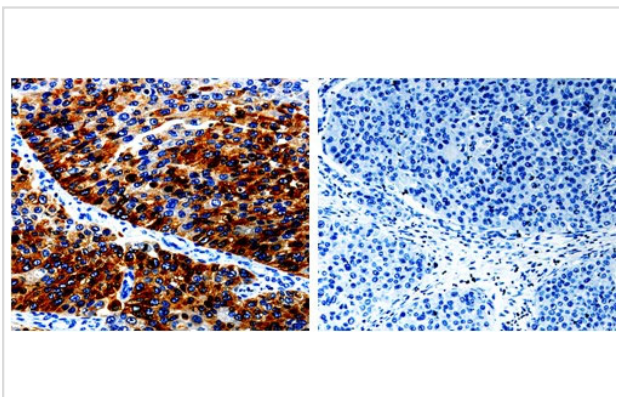
Gel: 10%SDS-PAGE

Lysate: 40 µg Mouse Large intestine tissue lysate

Primary antibody: 1/1000 dilution

Secondary antibody: Donkey anti Rabbit IgG - H&amp;L (HRP) at 1/3000 dilution

Exposure time: 20 seconds



The image on the left is immunohistochemistry of paraffin-embedded Human renal cancer tissue using 31005 (AGR2 Antibody) at dilution 1/10, on the right is treated with the fusion protein.

## Background

Anterior gradient protein 2 homolog (AGR2) is a human protein originally discovered in *Xenopus laevis*, encoded for by the gene of the same name. In *Xenopus* AGR2 is an important role in cement gland differentiation, however in human cancer cell lines high levels of AGR2 correlate with reduction of the p53 response and AGR2 levels are elevated in the preneoplastic tissue Barrett's oesophagus.

Note: This product is for in vitro research use only