

## ALDH1A2 Antibody

Catalog No: #31007

Package Size: #31007-1 50ul #31007-2 100ul

Orders: order@signalwayantibody.com

Support: tech@signalwayantibody.com

## Description

Product Name	ALDH1A2 Antibody
Host Species	Rabbit
Clonality	Polyclonal
Applications	ELISA WB IHC
Species Reactivity	Hu
Specificity	The antibody detects endogenous level of total ALDH1A2 protein.
Immunogen Type	Recombinant Protein
Immunogen Description	Fusion protein corresponding to C terminal 290 amino acids of Human Aldehyde dehydrogenase 1 family, member A2
Target Name	ALDH1A2
Other Names	Aldehyde dehydrogenase 1 family, member A2 , RALDH2, RALDH2-T, RALDH(II)
Accession No.	Swiss-Prot:P00352/O94788/P47895
Uniprot	P00352/O94788/P47895
Formulation	Rabbit IgG in pH7.4 PBS, 0.05% NaN <sub>3</sub> , 40% Glycerol.
Storage	Store at -20°C/1 year

## Application Details

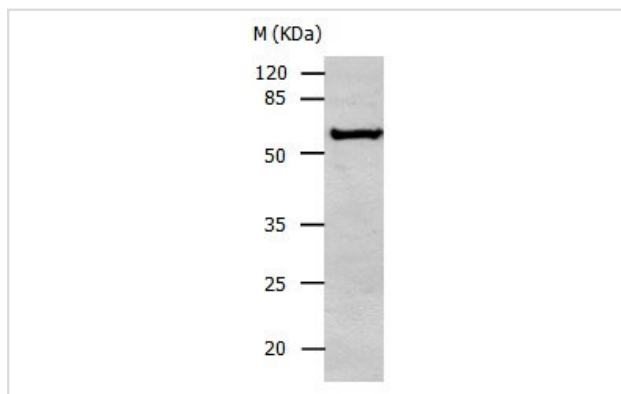
Predicted MW: 57kd

ELISA: 1:1000-1:5000

Western blotting: 1:500-1:1000

Immunohistochemistry: 1:25-1:100

## Images



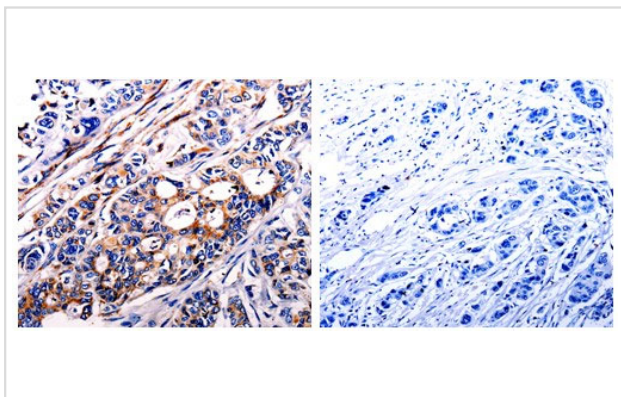
Gel: 10%SDS-PAGE

Lysate: 30 µg Human liver cancer tissue lysate

Primary antibody: 1/450 dilution

Secondary antibody: Donkey anti Rabbit IgG - H&amp;L (HRP) at 1/3000 dilution

Exposure time: 1 minute



The image on the left is immunohistochemistry of paraffin-embedded Human pancreatic cancer tissue using 31007 (ALDH1A2 Antibody) at dilution 1/45, on the right is treated with the fusion protein.

## Background

This protein belongs to the aldehyde dehydrogenase family of proteins. The product of this gene is an enzyme that catalyzes the synthesis of retinoic acid (RA) from retinaldehyde. Retinoic acid, the active derivative of vitamin A (retinol), is a hormonal signaling molecule that functions in developing and adult tissues. The studies of a similar mouse gene suggest that this enzyme and the cytochrome CYP26A1, concurrently establish local embryonic retinoic acid levels which facilitate posterior organ development and prevent spina bifida. Four transcript variants encoding distinct isoforms have been identified for this gene.

Note: This product is for in vitro research use only