

## ANXA2 Antibody

Catalog No: #31008

Package Size: #31008-1 50ul #31008-2 100ul

Orders: order@signalwayantibody.com

Support: tech@signalwayantibody.com

## Description

Product Name	ANXA2 Antibody
Host Species	Rabbit
Clonality	Polyclonal
Applications	ELISA WB IHC
Species Reactivity	Hu
Specificity	The antibody detects endogenous level of total ANXA2 protein.
Immunogen Type	Recombinant protein
Immunogen Description	Full length fusion protein
Target Name	ANXA2
Other Names	Annexin A2, P36, ANX2, LIP2, LPC2, CAL1H, LPC2D, ANX2L4, PAP-IV
Accession No.	Swiss-Prot:P07355Gene ID:302;
Uniprot	P07355
GeneID	302;
Formulation	Rabbit IgG in pH7.4 PBS, 0.05% NaN <sub>3</sub> , 40% Glycerol.
Storage	Store at -20°C/1 year

## Application Details

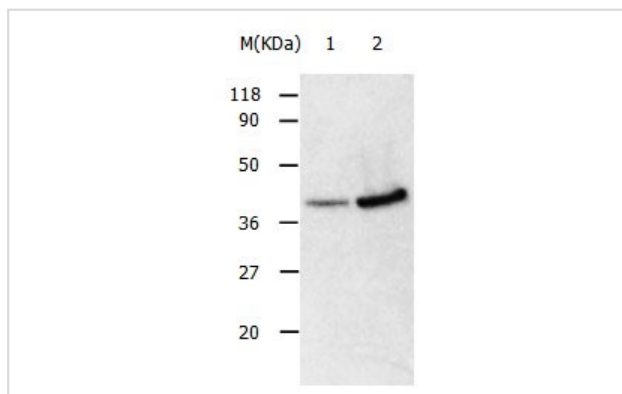
Predicted MW: 38kd

ELISA: 1:1000-1:5000

Western blotting: 1:500-1:2000

Immunohistochemistry: 1:50-1:200

## Images



Gel: 8%SDS-PAGE

Lane1: 293T cell lysate

Lane2: HepG2 cell lysate

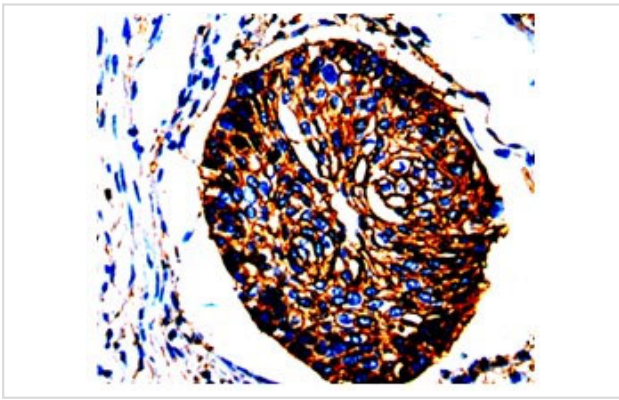
Lysates: 30ug per lane

Primary antibody: 1/500 dilution

Secondary antibody: Donkey anti Rabbit IgG - H&amp;L (HRP) at

1/3000 dilution

Exposure time: 30 seconds



The image is immunohistochemistry of paraffin-embedded Human cervical cancer tissue using 31008(ANXA2 Antibody) at dilution 1/50.

## Background

This gene encodes a member of the annexin family. Members of this calcium-dependent phospholipid-binding protein family play a role in the regulation of cellular growth and in signal transduction pathways. This protein functions as an autocrine factor which heightens osteoclast formation and bone resorption. This gene has three pseudogenes located on chromosomes 4, 9 and 10, respectively. Multiple alternatively spliced transcript variants encoding different isoforms have been found for this gene.

Note: This product is for in vitro research use only