

CASP2 Antibody

Catalog No: #31011

Package Size: #31011-1 50ul #31011-2 100ul

Orders: order@signalwayantibody.com

Support: tech@signalwayantibody.com

Description

Product Name	CASP2 Antibody
Host Species	Rabbit
Clonality	Polyclonal
Applications	ELISA WB IHC
Species Reactivity	Hu
Specificity	The antibody detects endogenous level of total CASP2 protein.
Immunogen Type	Recombinant protein
Immunogen Description	Fusion protein corresponding to N terminal 201 amino acids of Human Caspase-2
Target Name	CASP2
Other Names	Caspase-2, ICH1, NEDD2, CASP-2, NEDD-2
Accession No.	Swiss-Prot:P42575Gene ID:835;
Uniprot	P42575
GeneID	835;
Concentration	0.6mg/ml
Formulation	Rabbit IgG in pH7.4 PBS, 0.05% NaN ₃ , 40% Glycerol.
Storage	Store at -20°C/1 year

Application Details

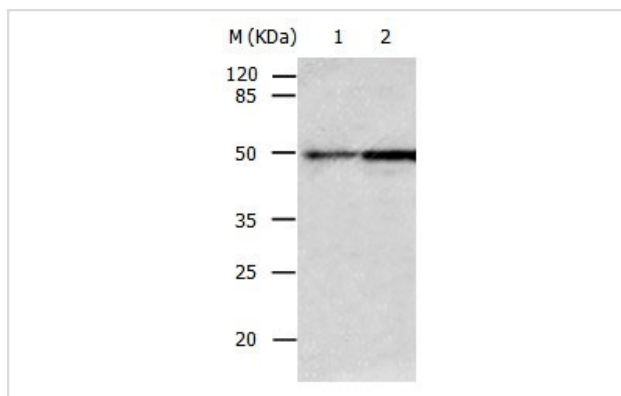
Predicted MW: 51kd

ELISA: 1:1000-1:10000

Western blotting: 1:1000-1:2000

Immunohistochemistry: 1:100-1:300

Images



Gel: 10%SDS-PAGE

Lane1: Human fetal kidney tissue lysate

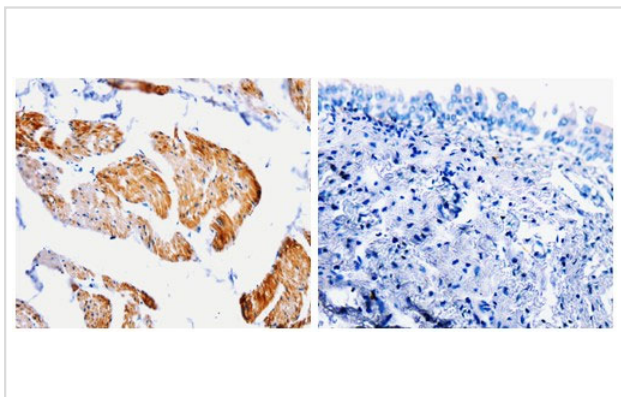
Lane2: Human fetal lung tissue lysate

Lysates: 30ug per lane

Primary antibody: 1/950 dilution

Secondary antibody: Donkey anti Rabbit IgG - H&L (HRP) at 1/3000 dilution

Exposure time: 2 minutes



The image on the left is immunohistochemistry of paraffin-embedded Human urinary bladder tissue using 31011(CASP2 Antibody) at dilution 1/100, on the right is treated with the fusion protein.

Background

This gene encodes a member of the cysteine-aspartic acid protease (caspase) family. Caspases mediate cellular apoptosis through the proteolytic cleavage of specific protein substrates. The encoded protein may function in stress-induced cell death pathways, cell cycle maintenance, and the suppression of tumorigenesis. Increased expression of this gene may play a role in neurodegenerative disorders including Alzheimer's disease, Huntington's disease and temporal lobe epilepsy. Alternatively spliced transcript variants encoding multiple isoforms have been observed for this gene.

Note: This product is for in vitro research use only