

SMAD4 Antibody

Catalog No: #31017

Package Size: #31017-1 50ul #31017-2 100ul

Orders: order@signalwayantibody.com

Support: tech@signalwayantibody.com

Description

Product Name	SMAD4 Antibody
Host Species	Rabbit
Clonality	Polyclonal
Applications	ELISA WB
Species Reactivity	Hu
Specificity	The antibody detects endogenous level of total SMAD4 protein.
Immunogen Type	Recombinant protein
Immunogen Description	Fusion protein corresponding to a region derived from 14-227 amino acids of human SMAD family member 4
Target Name	SMAD4
Other Names	SMAD family member 4, JIP, DPC4, MADH4, MYHRS
Accession No.	Swiss-Prot:Q13485Gene ID:4089;
Uniprot	Q13485
GeneID	4089;
Formulation	Rabbit IgG in pH7.4 PBS, 0.05% NaN ₃ , 40% Glycerol.
Storage	Store at -20°C/1 year

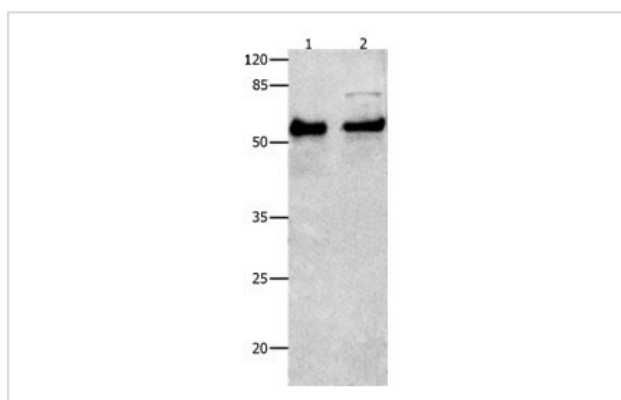
Application Details

Predicted MW: 61kd

ELISA: 1:1000-1:2000

Western blotting: 1:200-1:500

Images



Gel: 10%SDS-PAGE

Lane1: Human liver cancer tissue lysate

Lane2: HeLa cell lysate

Lysates: 30ug per lane

Primary antibody: 1/300 dilution

Secondary antibody: Goat anti Rabbit IgG - H&L (HRP) at 1/10000 dilution

Exposure time: 2 minutes

Background

This gene encodes a member of the Smad family of signal transduction proteins. Smad proteins are phosphorylated and activated by transmembrane serine-threonine receptor kinases in response to TGF-beta signaling. The product of this gene forms homomeric complexes and heteromeric

complexes with other activated Smad proteins, which then accumulate in the nucleus and regulate the transcription of target genes. This protein binds to DNA and recognizes an 8-bp palindromic sequence (GTCTAGAC) called the Smad-binding element (SBE). The Smad proteins are subject to complex regulation by post-translational modifications. Mutations or deletions in this gene have been shown to result in pancreatic cancer, juvenile polyposis syndrome, and hereditary hemorrhagic telangiectasia syndrome.

Note: This product is for in vitro research use only