

## BAG5 Antibody

Catalog No: #31019

Package Size: #31019-1 50ul #31019-2 100ul

Orders: order@signalwayantibody.com

Support: tech@signalwayantibody.com

## Description

Product Name	BAG5 Antibody
Host Species	Rabbit
Clonality	Polyclonal
Applications	ELISA WB
Species Reactivity	Hu
Specificity	The antibody detects endogenous level of total BAG5 protein.
Immunogen Type	Recombinant protein
Immunogen Description	Fusion protein corresponding to C terminal 350 amino acids of Human Bcl-2-associated athanogene 5
Target Name	BAG5
Other Names	Bcl-2-associated athanogene 5
Accession No.	Swiss-Prot:Q9UL15Gene ID:9529;
Uniprot	Q9UL15
GeneID	9529;
Formulation	Rabbit IgG in pH7.4 PBS, 0.05% NaN <sub>3</sub> , 40% Glycerol.
Storage	Store at -20°C/1 year

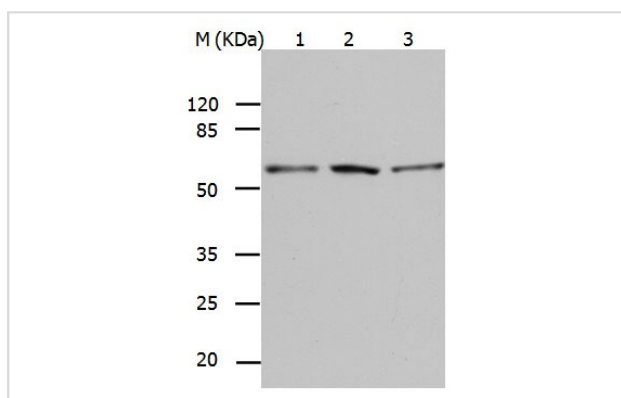
## Application Details

Predicted MW: 51kd

ELISA: 1:500-1:5000

Western blotting: 1:500-1:2000

## Images



Gel: 10%SDS-PAGE  
 Lane1: A549 cell lysate  
 Lane2: HeLa cell lysate  
 Lane3: 293T cell lysate  
 Lysates: 40 ug per lane  
 Primary antibody: 1/500 dilution  
 Secondary antibody: Donkey anti Rabbit IgG - H&L (HRP) at 1/3000 dilution  
 Exposure time: 1 minute

## Background

The protein encoded by this gene is a member of the BAG1-related protein family. BAG1 is an anti-apoptotic protein that functions through interactions with a variety of cell apoptosis and growth related proteins including BCL-2, Raf-protein kinase, steroid hormone receptors, growth factor receptors

and members of the heat shock protein 70 kDa family. This protein contains a BAG domain near the C-terminus, which could bind and inhibit the chaperone activity of Hsc70/Hsp70. Three transcript variants encoding two different isoforms have been found for this gene.

---

Note: This product is for in vitro research use only