

## IL23R Antibody

Catalog No: #31023

Package Size: #31023-1 50ul #31023-2 100ul

Orders: order@signalwayantibody.com

Support: tech@signalwayantibody.com

## Description

Product Name	IL23R Antibody
Host Species	Rabbit
Clonality	Polyclonal
Applications	ELISA WB IHC
Species Reactivity	Hu
Specificity	The antibody detects endogenous level of total IL23R protein.
Immunogen Type	Recombinant Protein
Immunogen Description	Fusion protein corresponding to a region derived from 31-227 amino acids of Human Interleukin-23 receptor
Target Name	IL23R
Other Names	Interleukin-23 receptor
Accession No.	Swiss-Prot:Q5VWK5Gene ID:149233;
Uniprot	Q5VWK5
GeneID	149233;
Formulation	Rabbit IgG in pH7.4 PBS, 0.05% NaN <sub>3</sub> , 40% Glycerol.
Storage	Store at -20°C/1 year

## Application Details

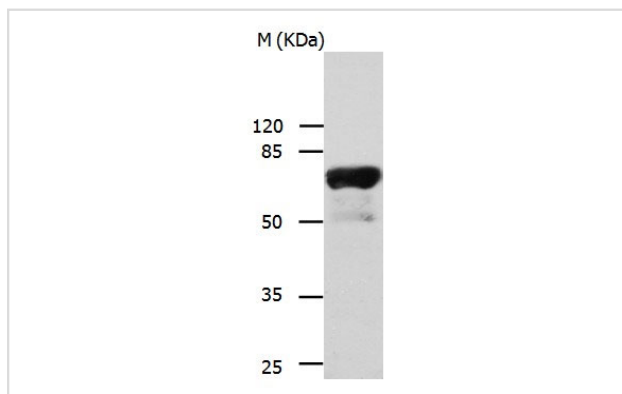
Predicted MW: 72kd

ELISA: 1:500-1:5000

Western blotting: 1:500-1:2000

Immunohistochemistry: 1:5-1:20

## Images



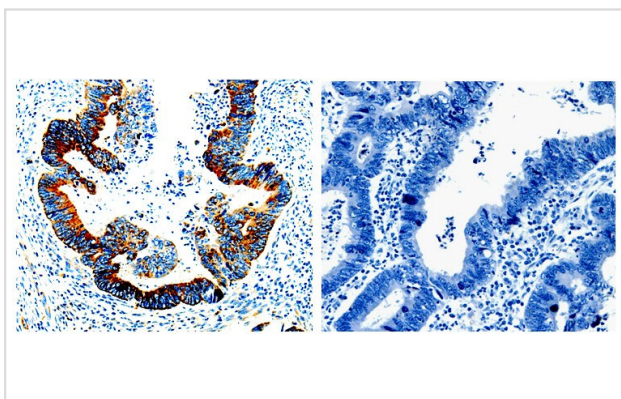
Gel: 8%SDS-PAGE

Lysate: 40 µg Human sigmoid tissue lysate

Primary antibody: 1/300 dilution

Secondary antibody: Donkey anti Rabbit IgG - H&amp;L (HRP) at 1/3000 dilution

Exposure time: 30 seconds



The image on the left is immunohistochemistry of paraffin-embedded Human rectal cancer tissues using 31023 (IL23R Antibody) at dilution 1/10, on the right is treated with the fusion protein.

## Background

The protein encoded by this gene is a subunit of the receptor for IL23A/IL23. This protein pairs with the receptor molecule IL12RB1/IL12Rbeta1, and both are required for IL23A signaling. This protein associates constitutively with Janus kinase 2 (JAK2), and also binds to transcription activator STAT3 in a ligand-dependent manner.

Note: This product is for in vitro research use only