

ABCB8 Antibody

Catalog No: #31025

Package Size: #31025-1 50ul #31025-2 100ul

Orders: order@signalwayantibody.com

Support: tech@signalwayantibody.com

Description

Product Name	ABCB8 Antibody
Host Species	Rabbit
Clonality	Polyclonal
Applications	ELISA WB IHC
Species Reactivity	Hu
Specificity	The antibody detects endogenous level of total ABCB8 protein.
Immunogen Type	Recombinant protein
Immunogen Description	Fusion protein corresponding to a region derived from 394-693 amino acids of Human ATP-binding cassette sub-family B member 8
Target Name	ABCB8
Other Names	ATP-binding cassette sub-family B member 8, MABC1, M-ABC1, EST328128
Accession No.	Swiss-Prot:Q9NUT2Gene ID:11194;
Uniprot	Q9NUT2
GeneID	11194;
Formulation	Rabbit IgG in pH7.4 PBS, 0.05% NaN ₃ , 40% Glycerol.
Storage	Store at -20°C/1 year

Application Details

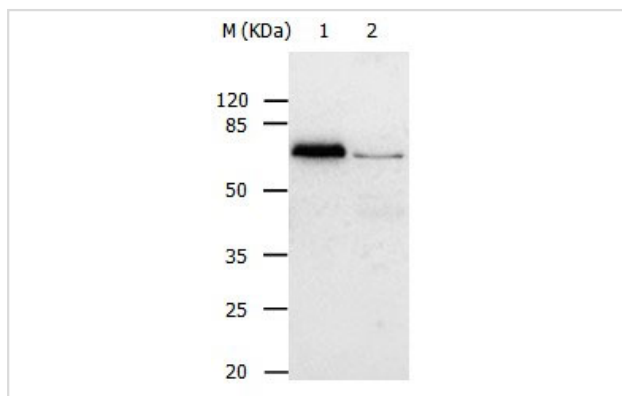
Predicted MW: 76kd

ELISA: 1:2000-1:5000

Western blotting: 1:500-1:2000

Immunohistochemistry: 1:25-1:100

Images



Gel: 8%SDS-PAGE

Lane1: HeLa cell lysate

Lane2: HepG2 cell lysate

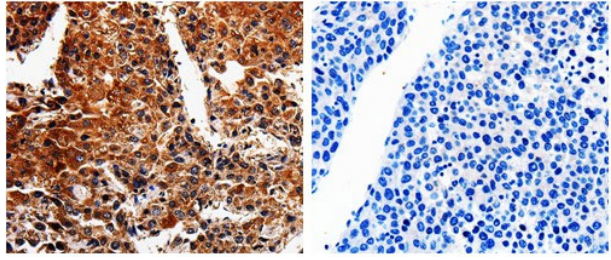
Lysates: 20 ug per lane

Primary antibody: 1/500 dilution

Secondary antibody: Donkey anti Rabbit IgG - H&L (HRP) at

1/3000 dilution

Exposure time: 1 minute



The image on the left is immunohistochemistry of paraffin-embedded Human liver cancer tissue using 31025(ABCB8 Antibody) at dilution 1/17, on the right is treated with the fusion protein.

Background

The membrane-associated protein encoded by this gene is a member of the superfamily of ATP-binding cassette (ABC) transporters. ABC proteins transport various molecules across extra- and intra-cellular membranes. ABC genes are divided into seven distinct subfamilies (ABC1, MDR/TAP, MRP, ALD, OABP, GCN20, White). This protein is a member of the MDR/TAP subfamily. Members of the MDR/TAP subfamily are involved in multidrug resistance as well as antigen presentation. The function of this half-transporter has not yet been determined; however, it may involve the compartmentalization and transport of heme, as well as peptides, from the mitochondria to the nucleus and cytosol. This protein may also play a role in the transport of phospholipids into mitochondrial membranes.

Note: This product is for in vitro research use only