

## AIFM1 Antibody

Catalog No: #31026

Package Size: #31026-1 50ul #31026-2 100ul

Orders: order@signalwayantibody.com

Support: tech@signalwayantibody.com

## Description

Product Name	AIFM1 Antibody
Host Species	Rabbit
Clonality	Polyclonal
Applications	ELISA WB IHC
Species Reactivity	Hu
Specificity	The antibody detects endogenous level of total AIFM1 protein.
Immunogen Type	Recombinant Protein
Immunogen Description	Fusion protein corresponding to C terminal 250 amino acids of human apoptosis-inducing factor, mitochondrion-associated, 1
Target Name	AIFM1
Other Names	apoptosis-inducing factor, mitochondrion-associated, 1, AIF, PDCD8, COXPD6
Accession No.	Swiss-Prot:O95831Gene ID:9131;
Uniprot	O95831
GeneID	9131;
Formulation	Rabbit IgG in pH7.4 PBS, 0.05% NaN <sub>3</sub> , 40% Glycerol.
Storage	Store at -20°C/1 year

## Application Details

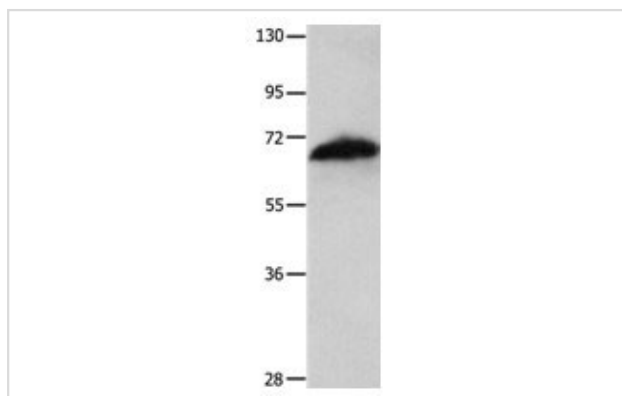
Predicted MW: 67kd

ELISA: 1:1000-1:2000

Western blotting: 1:200-1:1000

Immunohistochemistry: 1:15-1:50

## Images



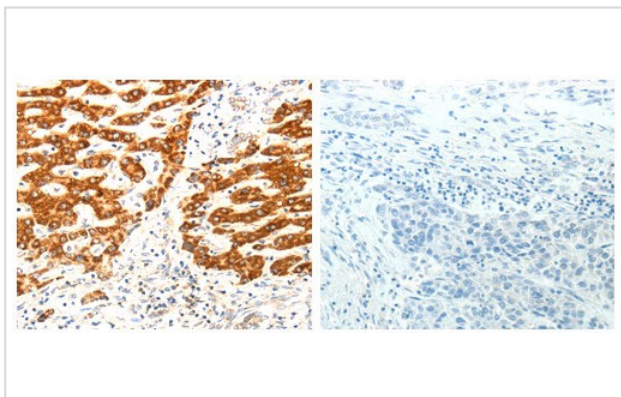
Gel: 10%SDS-PAGE

Lysate: 60 µg Jurkat cell lysate

Primary antibody: 1/150 dilution

Secondary antibody: Goat anti Rabbit IgG - H&amp;L (HRP) at 1/10000 dilution

Exposure time: 40 seconds



The image on the left is immunohistochemistry of paraffin-embedded human liver cancer tissue using 31026 (AIFM1 Antibody) at dilution 1/15, on the right is treated with the fusion protein.

## Background

This gene encodes a flavoprotein essential for nuclear disassembly in apoptotic cells, and it is found in the mitochondrial intermembrane space in healthy cells. Induction of apoptosis results in the translocation of this protein to the nucleus where it affects chromosome condensation and fragmentation. In addition, this gene product induces mitochondria to release the apoptogenic proteins cytochrome c and caspase-9. Mutations in this gene cause combined oxidative phosphorylation deficiency 6, which results in a severe mitochondrial encephalomyopathy. Alternative splicing results in multiple transcript variants. A related pseudogene has been identified on chromosome 10.?

Note: This product is for in vitro research use only