

KRT17 Antibody

Catalog No: #31031

Package Size: #31031-1 50ul #31031-2 100ul

Orders: order@signalwayantibody.com

Support: tech@signalwayantibody.com

Description

Product Name	KRT17 Antibody
Host Species	Rabbit
Clonality	Polyclonal
Applications	ELISA WB IHC
Species Reactivity	Hu
Specificity	The antibody detects endogenous level of total KRT17 protein.
Immunogen Type	Recombinant protein
Immunogen Description	Fusion protein corresponding to a region derived from 102-346 amino acids of Human Keratin, type I cytoskeletal 17
Target Name	KRT17
Other Names	Keratin, type I cytoskeletal 17, PC, K17, PC2, PCHC1
Accession No.	Swiss-Prot:Q04695Gene ID:3872;
Uniprot	Q04695
GeneID	3872;
Formulation	Rabbit IgG in pH7.4 PBS, 0.05% NaN ₃ , 40% Glycerol.
Storage	Store at -20°C/1 year

Application Details

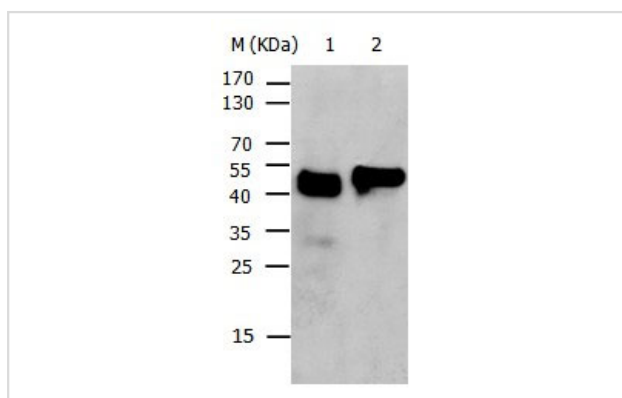
Predicted MW: 48kd

ELISA: 1:1000-1:5000

Western blotting: 1:200-1:500

Immunohistochemistry: 1:50-1:200

Images



Gel: 10%SDS-PAGE

Lane1: 231 cell lysate

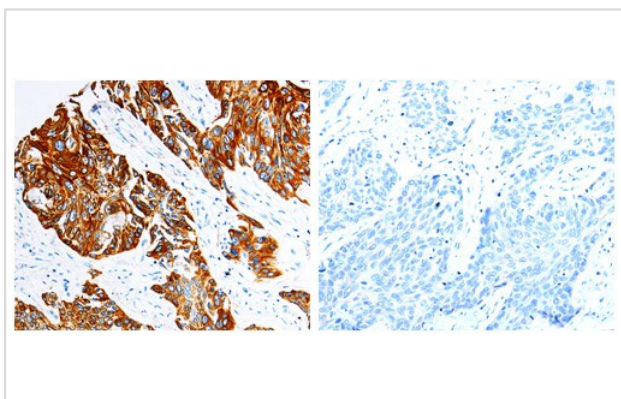
Lane2: HeLa cell lysate

Lysates: 30ug per lane

Primary antibody: 1/400 dilution

Secondary antibody: Donkey anti Rabbit IgG - H&L (HRP) at 1/3000 dilution

Exposure time: 1 second



The image on the left is immunohistochemistry of paraffin-embedded Human esophagus cancer tissue using 31031 (KRT17 Antibody) at dilution 1/50, on the right is treated with the fusion protein.

Background

This gene encodes the type I intermediate filament chain keratin 17, expressed in nail bed, hair follicle, sebaceous glands, and other epidermal appendages. Mutations in this gene lead to Jackson-Lawler type pachyonychia congenita and steatocystoma multiplex.

Note: This product is for in vitro research use only