

RAP1B Antibody

Catalog No: #31033

Package Size: #31033-1 50ul #31033-2 100ul

Orders: order@signalwayantibody.com

Support: tech@signalwayantibody.com

Description

Product Name	RAP1B Antibody
Host Species	Rabbit
Clonality	Polyclonal
Applications	ELISA WB
Species Reactivity	Hu Ms
Specificity	The antibody detects endogenous level of total RAP1B protein.
Immunogen Type	Recombinant protein
Immunogen Description	Full length fusion protein
Target Name	RAP1B
Other Names	Ras-related protein Rap-1b, K-REV, RAL1B
Accession No.	Swiss-Prot:P61224Gene ID:5908;
Uniprot	P61224
GeneID	5908;
Concentration	0.5mg/ml
Formulation	Rabbit IgG in pH7.4 PBS, 0.05% NaN ₃ , 40% Glycerol.
Storage	Store at -20°C/1 year

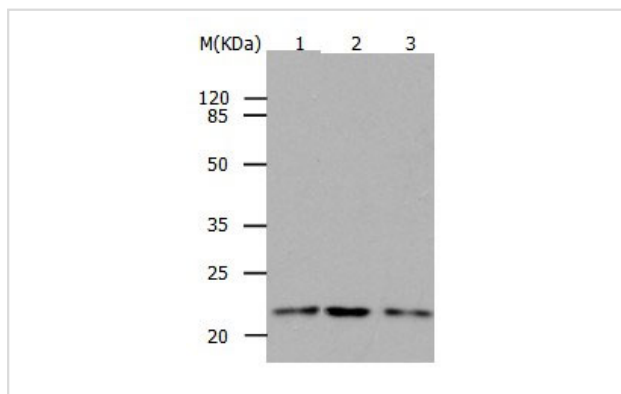
Application Details

Predicted MW: 21kd

ELISA: 1:1000-1:5000

Western blotting: 1:500-1:1000

Images



Gel: 10%SDS-PAGE

Lane1: Hela cell lysate

Lane2: HepG2 cell lysate

Lane3: Human cervical cancer tissue lysate

Lysates: 24 ug per lane

Primary antibody: 1/ 700 dilution

Secondary antibody: Donkey anti Rabbit IgG - H&L (HRP) at

1/ 3000 dilution

Exposure time: 1 minute

Background

This gene encodes a member of the RAS-like small GTP-binding protein superfamily. Members of this family regulate multiple cellular processes

including cell adhesion and growth and differentiation. This protein localizes to cellular membranes and has been shown to regulate integrin-mediated cell signaling. This protein also plays a role in regulating outside-in signaling in platelets. Alternate splicing results in multiple transcript variants. Pseudogenes of this gene are found on chromosomes 3, 5, 6 and 9.

Note: This product is for in vitro research use only