

VIM Antibody

Catalog No: #31035

Package Size: #31035-1 50ul #31035-2 100ul

Orders: order@signalwayantibody.com

Support: tech@signalwayantibody.com

Description

Product Name	VIM Antibody
Host Species	Rabbit
Clonality	Polyclonal
Applications	ELISA WB
Species Reactivity	Hu
Specificity	The antibody detects endogenous level of total VIM protein.
Immunogen Type	Recombinant protein
Immunogen Description	Fusion protein corresponding to a region derived from 96-407 amino acids of Human Vimentin
Target Name	VIM
Other Names	Vimentin
Accession No.	Swiss-Prot:P08670Gene ID:7431;
Uniprot	P08670
GeneID	7431;
Formulation	Rabbit IgG in pH7.4 PBS, 0.05% NaN ₃ , 40% Glycerol.
Storage	Store at -20°C/1 year

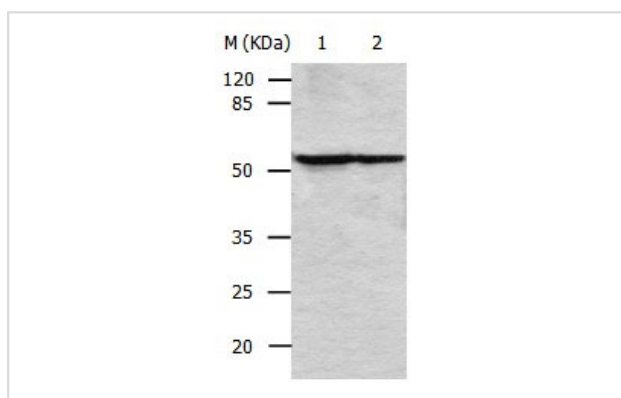
Application Details

Predicted MW: 54kd

ELISA: 1:1000-1:5000

Western blotting: 1:200-1:1000

Images



Gel: 8%SDS-PAGE

Lane1: HeLa cell lysate

Lane2: 293T cell lysate

Lysates: 30ug per lane

Primary antibody: 1/250 dilution

Secondary antibody: Donkey anti Rabbit IgG - H&L (HRP) at

1/3000 dilution

Exposure time: 30 seconds

Background

This gene encodes a member of the intermediate filament family. Intermediate filaments, along with microtubules and actin microfilaments, make up the cytoskeleton. The protein encoded by this gene is responsible for maintaining cell shape, integrity of the cytoplasm, and stabilizing cytoskeletal

interactions. It is also involved in the immune response, and controls the transport of low-density lipoprotein (LDL)-derived cholesterol from a lysosome to the site of esterification. It functions as an organizer of a number of critical proteins involved in attachment, migration, and cell signaling. Mutations in this gene causes a dominant, pulverulent cataract.

Note: This product is for in vitro research use only